

## HOWTO MAKE A PPP DIAL-UP CONNECTION IN UBUNTU 9.04

With your computer powered off:  
Install an analog dial-up modem into your computer.

Boot up your computer.

Use the “Synaptic Application Manager” to install “Gnome PPP” and all “dependencies”.

Click on “Applications”.

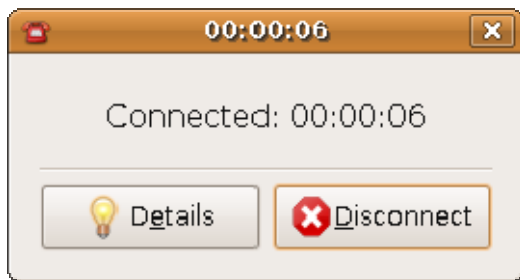
Click on “Internet”.

Click on “GnomePPP”.

Configure a new dial-up connection using the settings and documentation that was provided by your dial-up Internet Service Provider.

Then, click on the "Connect" button.

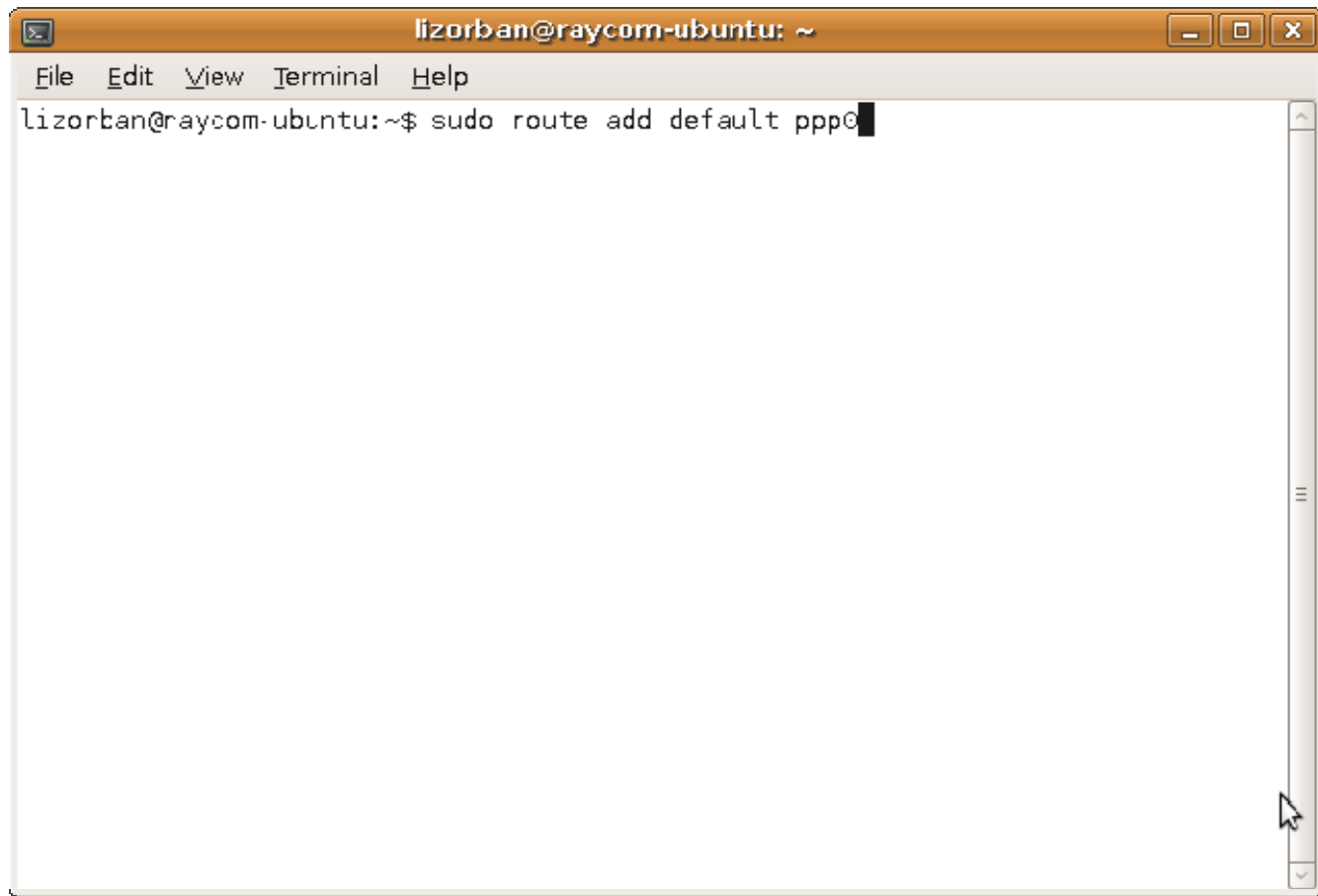
\*



However, after making a PPP dial-up connection, you will probably still be unable to access the Internet with Firefox or perform FTP in a “Terminal Window”. This is because your new PPP dialup connection is not in the “Route Table” that is maintained in RAM by Ubuntu.

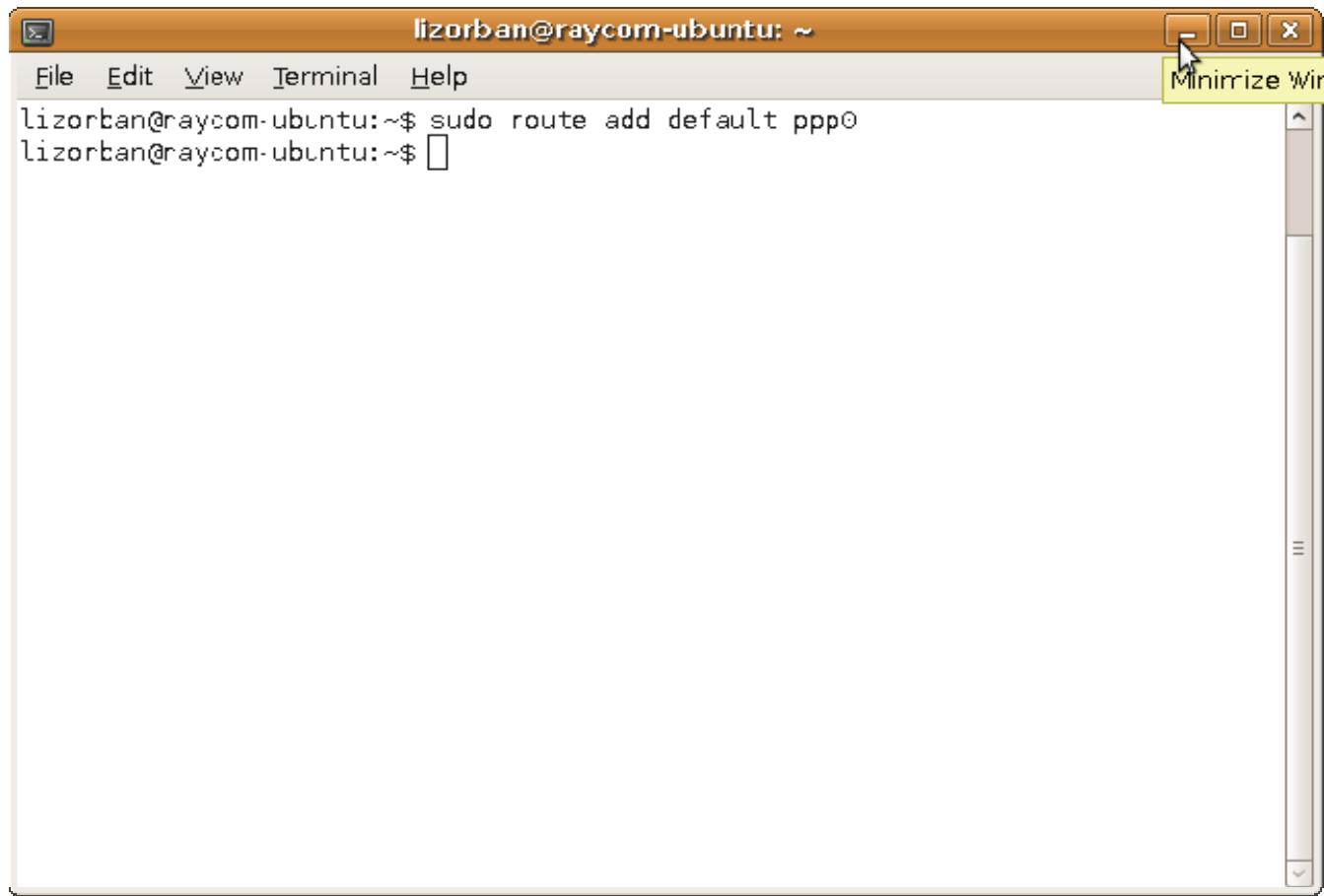
To add your PPP dial-up connection to your “Route Table”, open a “Terminal Window” from within “Accessories” under “Applications”. Then run the following command:

```
sudo route add default ppp0
```



\*

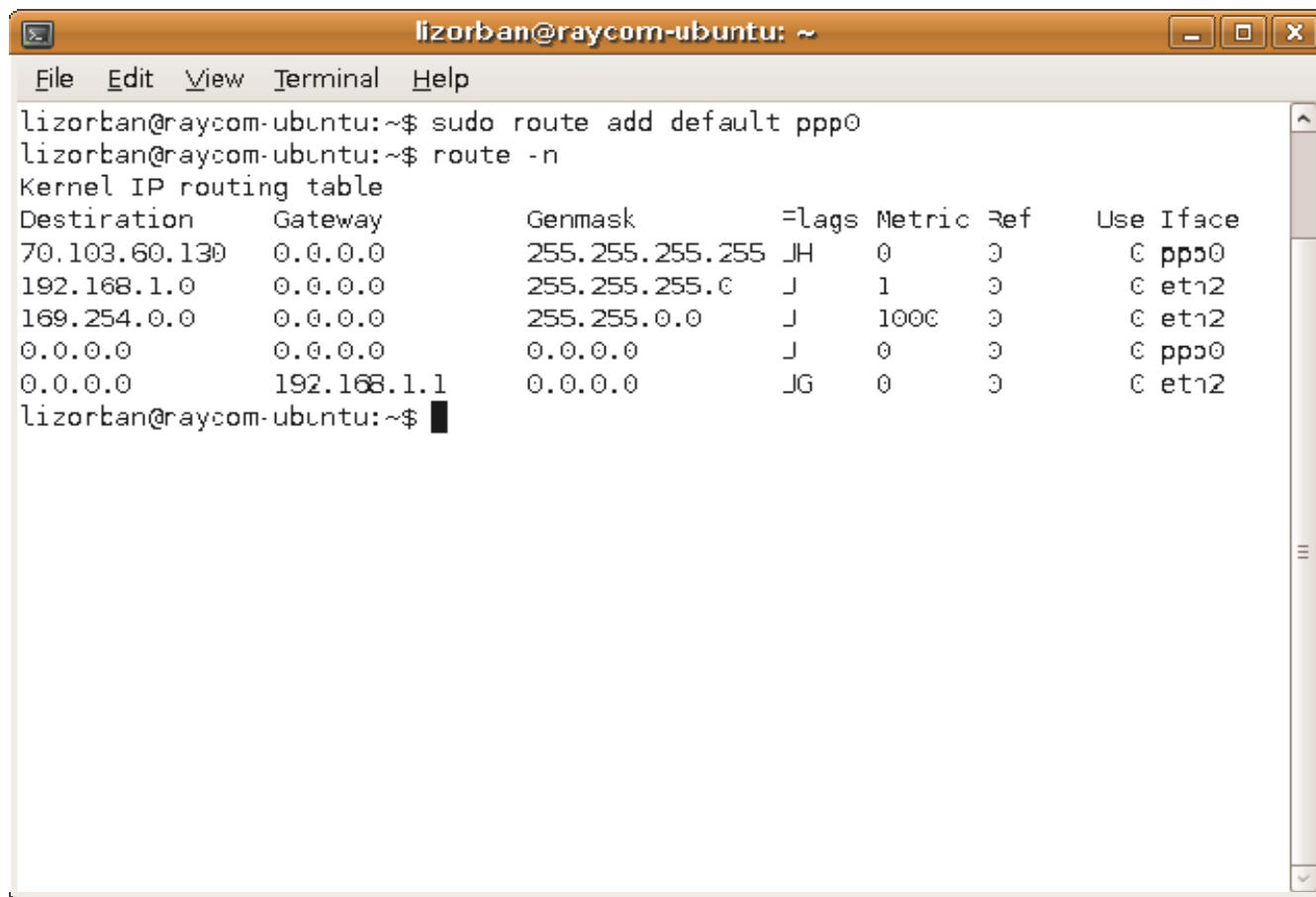
<enter>



\*  
No news is good news !

If you now run the route command:

```
route -n  
<enter>
```



```
lizorban@raycom-ubuntu: ~  
File Edit View Terminal Help  
lizorban@raycom-ubuntu:~$ sudo route add default ppp0  
lizorban@raycom-ubuntu:~$ route -n  
Kernel IP routing table  
Destination      Gateway          Genmask         =lags Metric Ref      Use Iface  
70.103.60.130    0.0.0.0          255.255.255.255 JH      0       0        C ppp0  
192.168.1.0      0.0.0.0          255.255.255.0  J       1       0        C eth2  
169.254.0.0      0.0.0.0          255.255.0.0    J       1000    0        C eth2  
0.0.0.0          0.0.0.0          0.0.0.0        J       0       0        C ppp0  
0.0.0.0          192.168.1.1     0.0.0.0        JG      0       0        C eth2  
lizorban@raycom-ubuntu:~$ █
```

\*  
Your PPP dial-up connection is successfully added to your "Route Table" if you see a line that says:

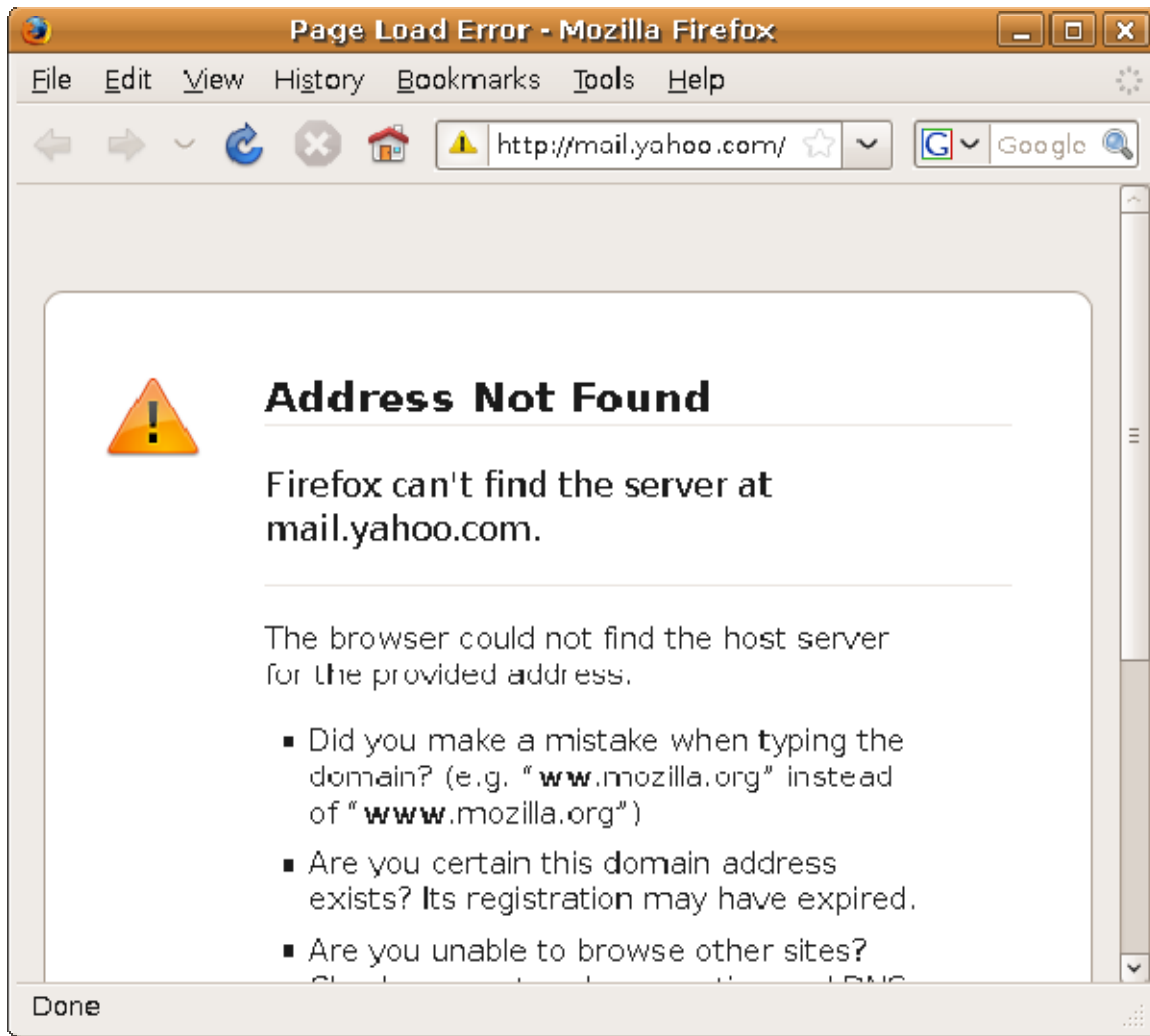
```
Destination:  
<IP address that is not all zeros>  
Gateway:  
0.0.0.0.  
Genmask  
<not all zeros>  
Flags:  
UH  
Iface:  
ppp0
```

You should now be able to access Web pages with Firefox or your browser of choice.

If you still cannot access Web pages out on the Internet, then do the following:

After making a PPP Dial-up connection, you sometimes have to change your Web browser from "Offline" on "Online" mode before you can access Web sites:

\*\*\*\*\*



Click on "File" on Firefox's "Menu bar".  
Uncheck "Work Offline".

You should now be able to access Web pages out on the Internet !