

# USING WINDOWS' "NETWORK BRIDGE"

by Francis Chao  
fchao2@yahoo.com  
(520)331-5465

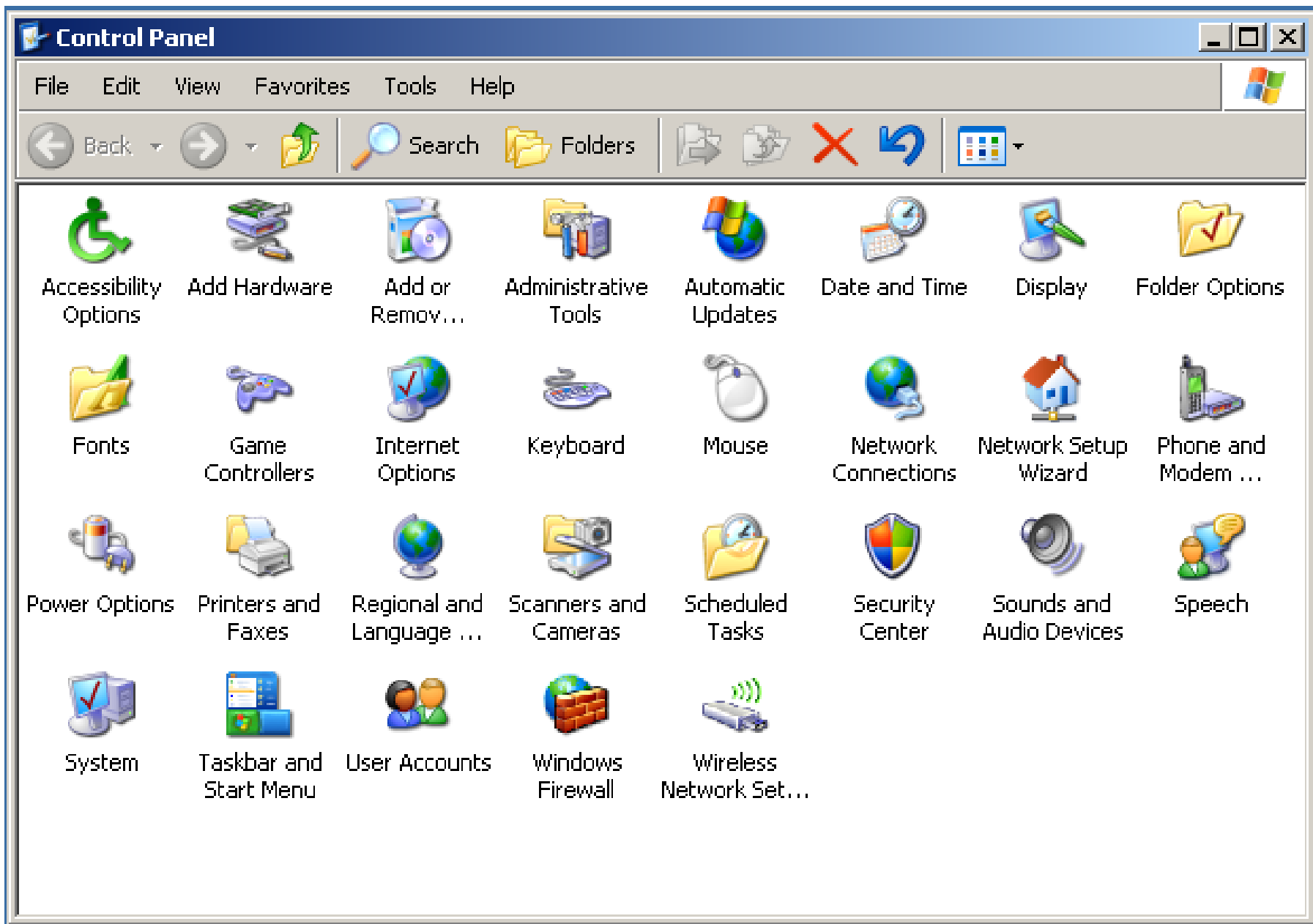


# SUMMARY

Windows' "Network Bridge" is a virtual network device that is located inside any computer that are running "Windows XP" and higher. It allows you to attach a new/additional computer to your local area network by attaching it to an existing Internet-connected computer.

# Windows' "Network Bridge"

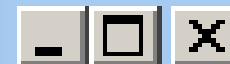
- Steps for installing and using a virtual "Network Bridge" in "Windows XP" and higher
- Step 1: Open the "Control Panel":



# Windows' "Network Bridge"

- Steps for installing and using a virtual "Network Bridge" in "Windows XP" and higher (continued)
- Step 2: Open the "Network Connections" window/applet:

# Network Connections



Netw...

Networ...



Sea

Organize ▾



Local Area Connection  
Network

Intel(R) PRO/1000 MT Network Conn...



Local Area Connection 2  
Identifying...

Intel(R) PRO/1000 MT Network Conn...

# Windows' "Network Bridge"

- Steps for installing and using a virtual "Network Bridge" in "Windows XP" and higher (continued)
- Step 3: Hold down a "Ctrl" key.
- Step 4: While holding down a "Ctrl" key, click on each and every network adapter that you want to connect together into a virtual "network bridge":

# Network Connections



Netw... Networ...



Sea

Organize



Local Area Connection  
Network  
Intel(R) PRO/1000 MT Network Conn...

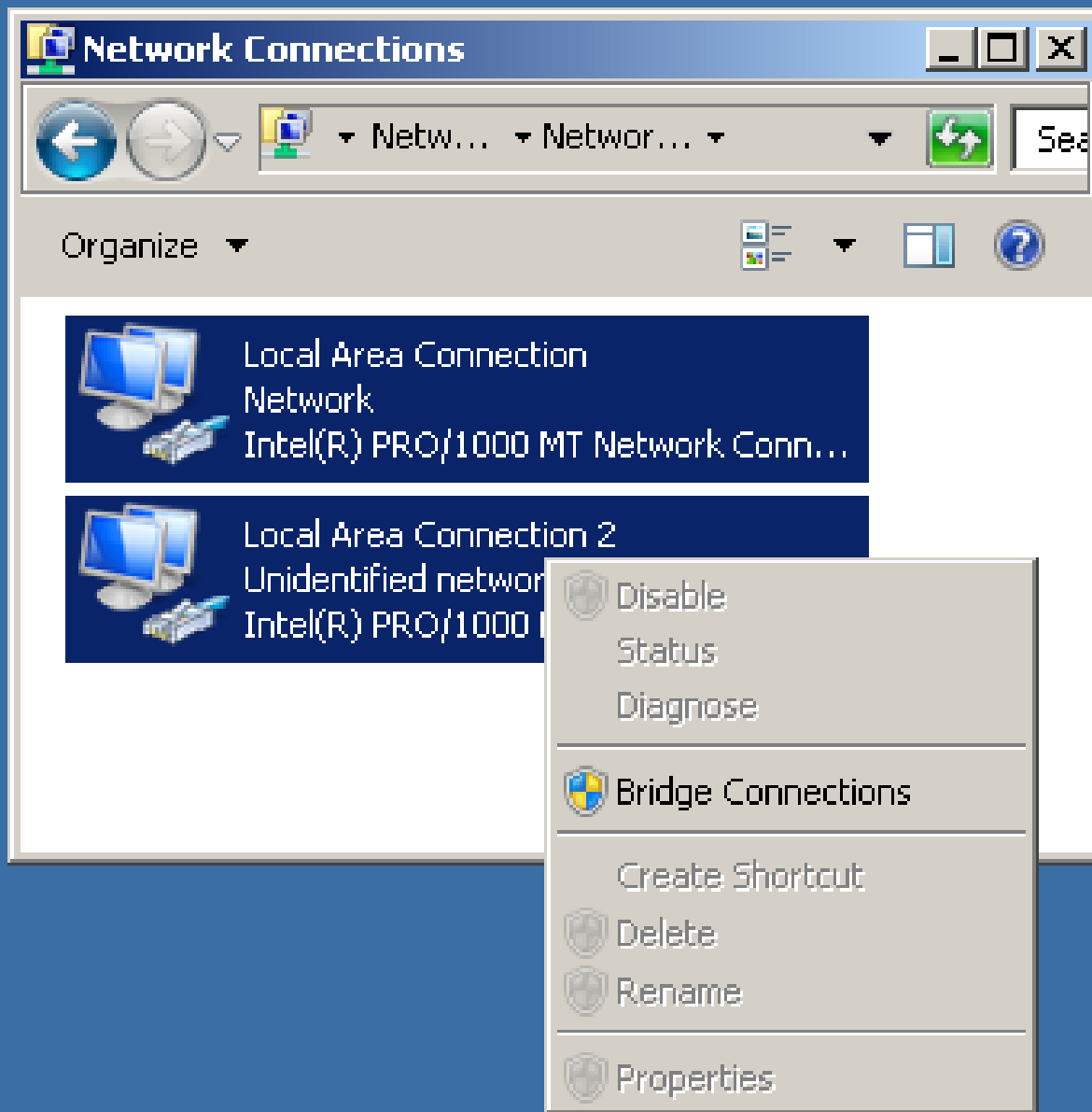


Local Area Connection 2  
Unidentified network  
Intel(R) PRO/1000 MT Network Conn...



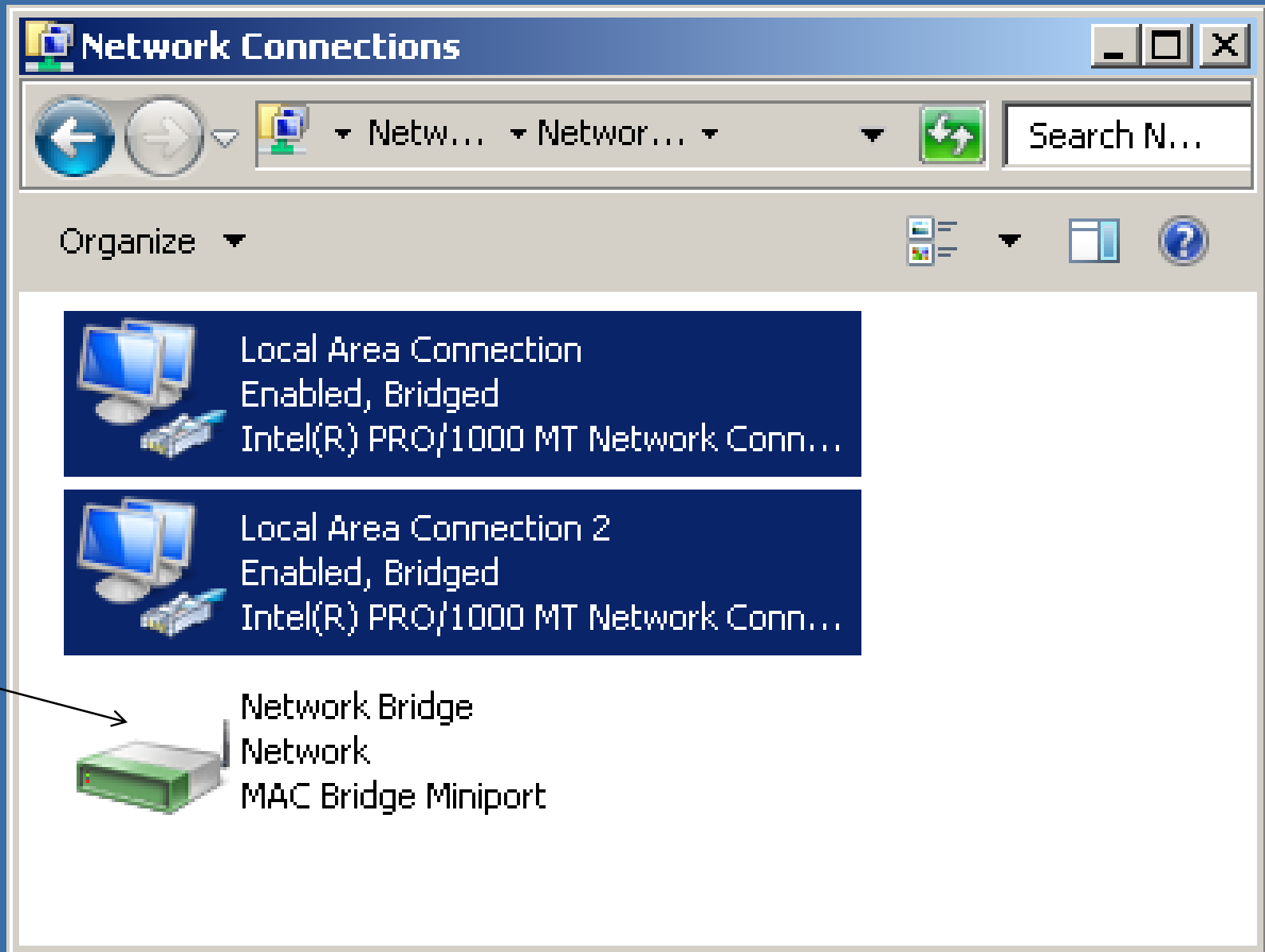
# Windows' "Network Bridge"

- Steps for installing and using a virtual "Network Bridge" in "Windows XP" and higher (continued)
- Step 5: Release the "Ctrl" key.
- Step 6: Use the RIGHT mouse button to click on any of the network adapters that you click on in "Step 4".
- Step 7: A pop-up context menu will be displayed:



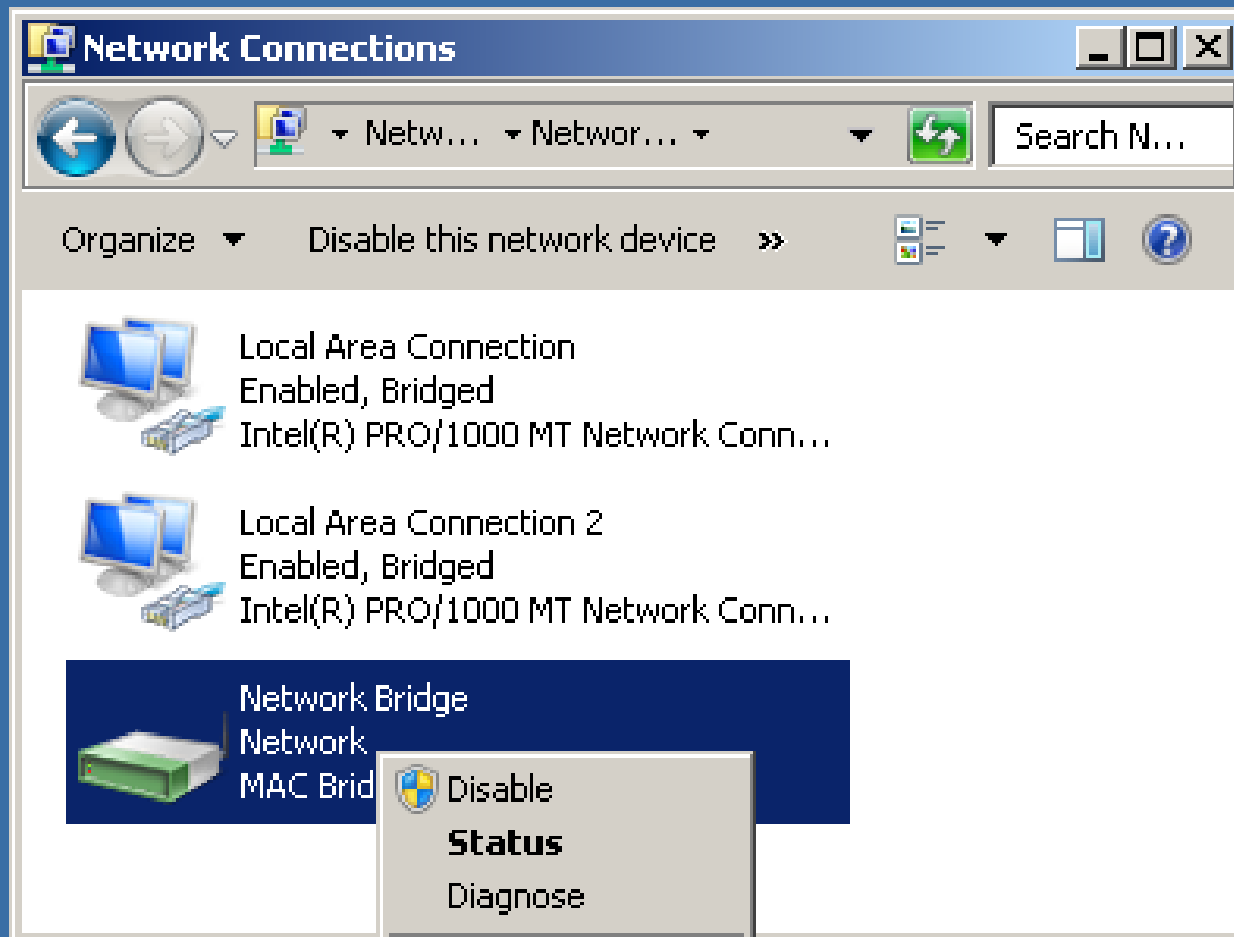
# Windows' "Network Bridge"

- Steps for installing and using a virtual "Network Bridge" in "Windows XP" and higher (continued)
- Step 8: Click on "Bridge" in the pop-up context menu.
- Step 9: The pop-up context menu will disappear.
- Step 10: A new, virtual "Network Bridge" will be displayed inside the "Network Connections" window:



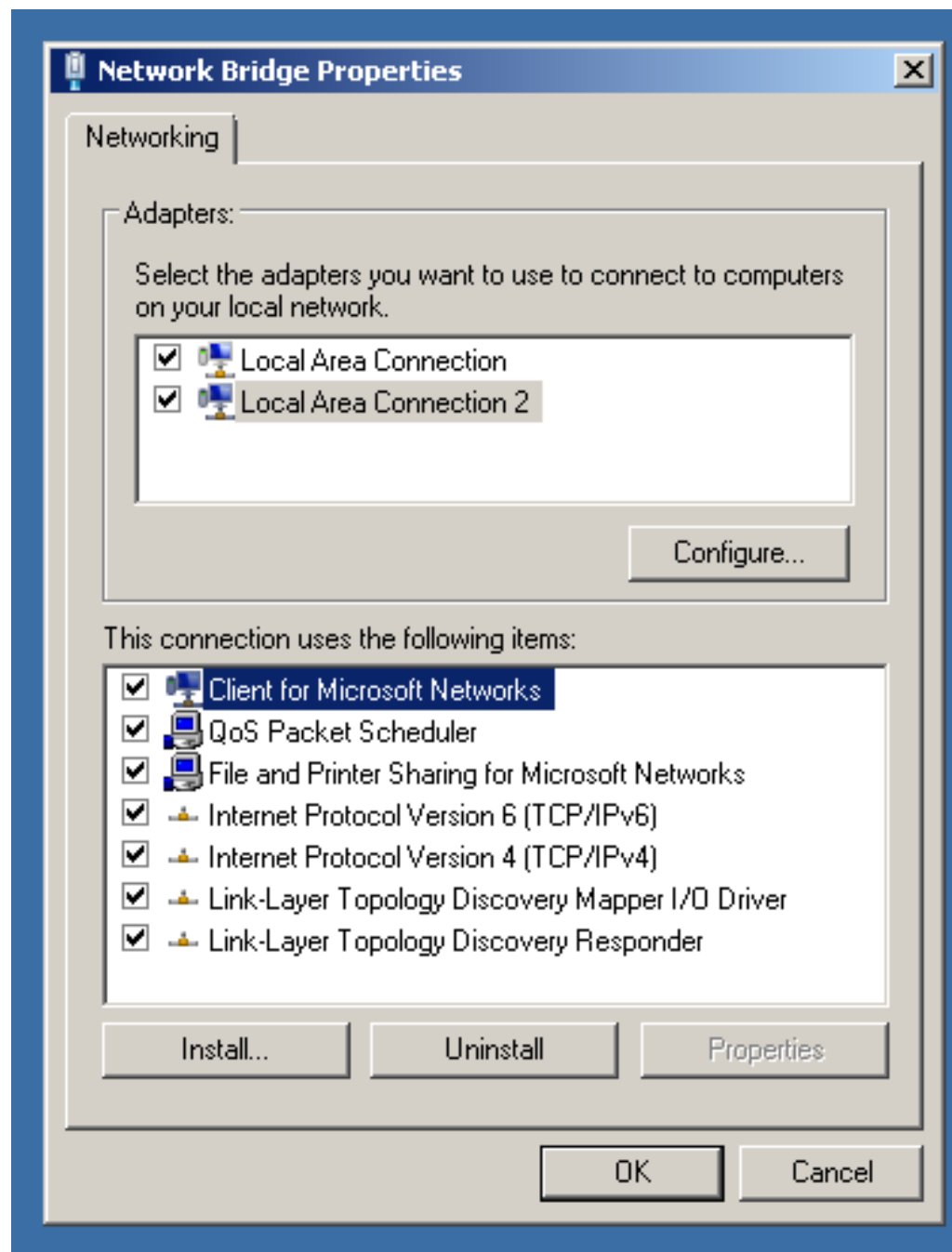
# Windows' "Network Bridge"

- Steps for installing and using a virtual "Network Bridge" in "Windows XP" and higher (continued)
- Step 11: Use the RIGHT mouse button to click on the virtual "Network Bridge".
- Step 12: A pop-up context menu will be displayed:



# Windows' "Network Bridge"

- Steps for installing and using a virtual "Network Bridge" in "Windows XP" and higher (continued)
- Step 13: Click on "Properties" in the pop-up context menu.
- Step 14: A "Properties" box for the "Network Bridge" will be displayed:





# Windows' "Network Bridge"

- Steps for installing and using a virtual "Network Bridge" in "Windows XP" and higher (continued)
- Note that the network adapters that you selected in "Step 4" are now shown as belonging to the "Network Bridge".

# Hardware view of a single, Internet-connected "Windows XP/Vista/ 7" computer

Upstream to the real Internet



"Windows 7" Computer

A new "Windows" computer shows up.

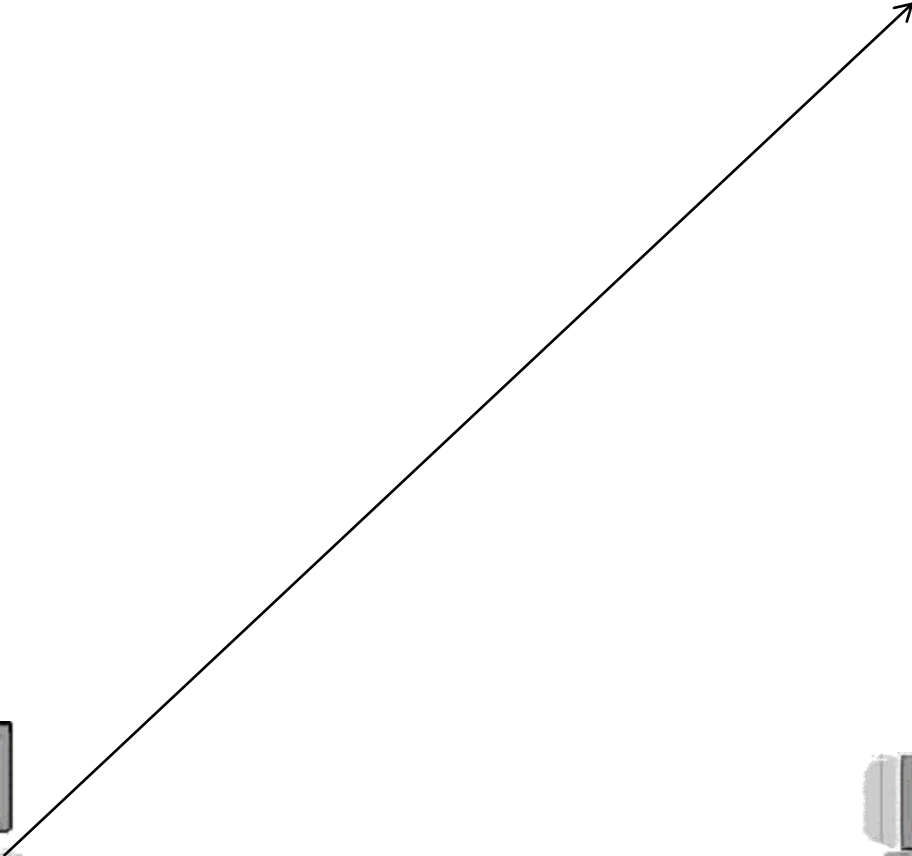
Upstream to the real Internet



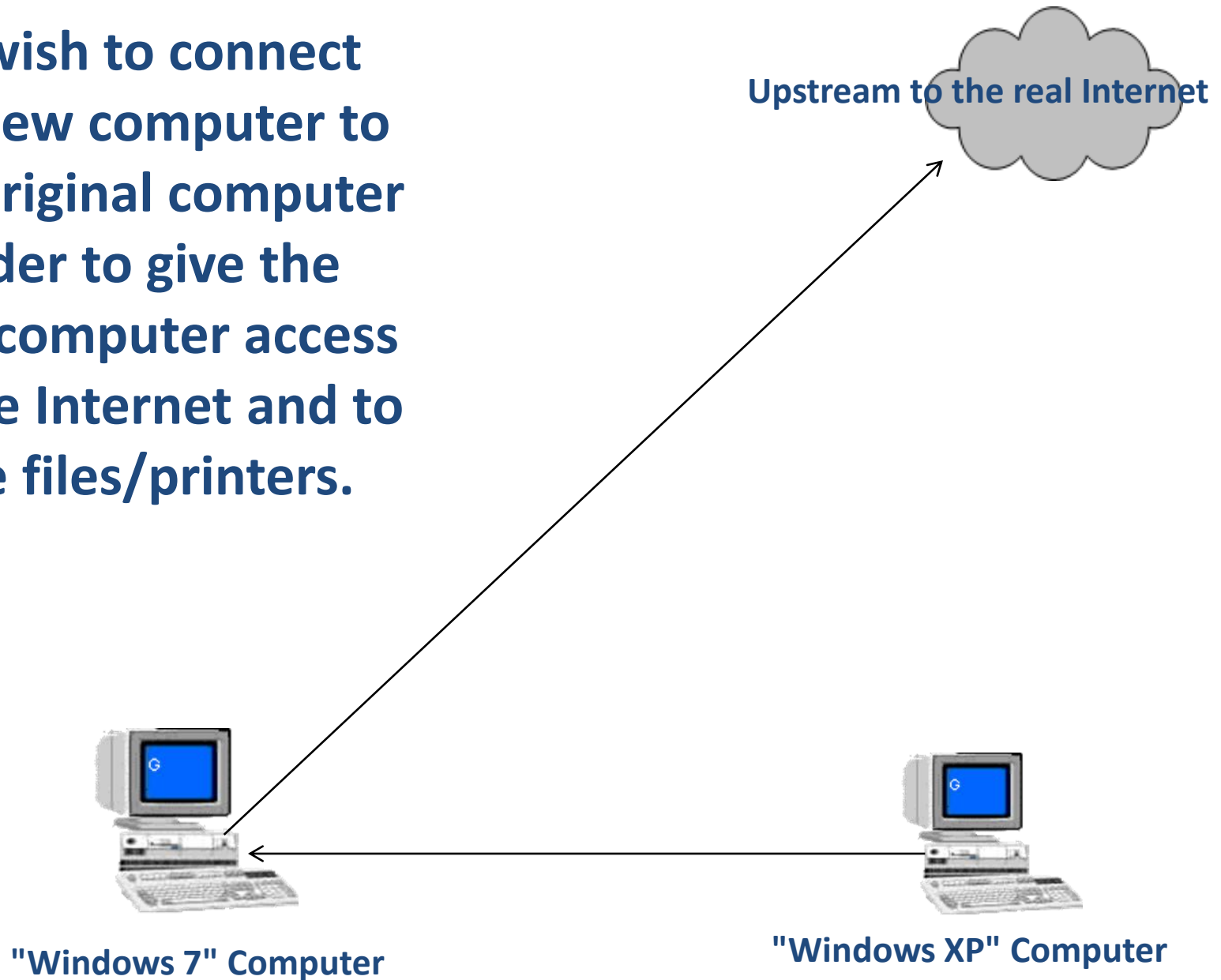
"Windows 7" Computer



"Windows XP" Computer

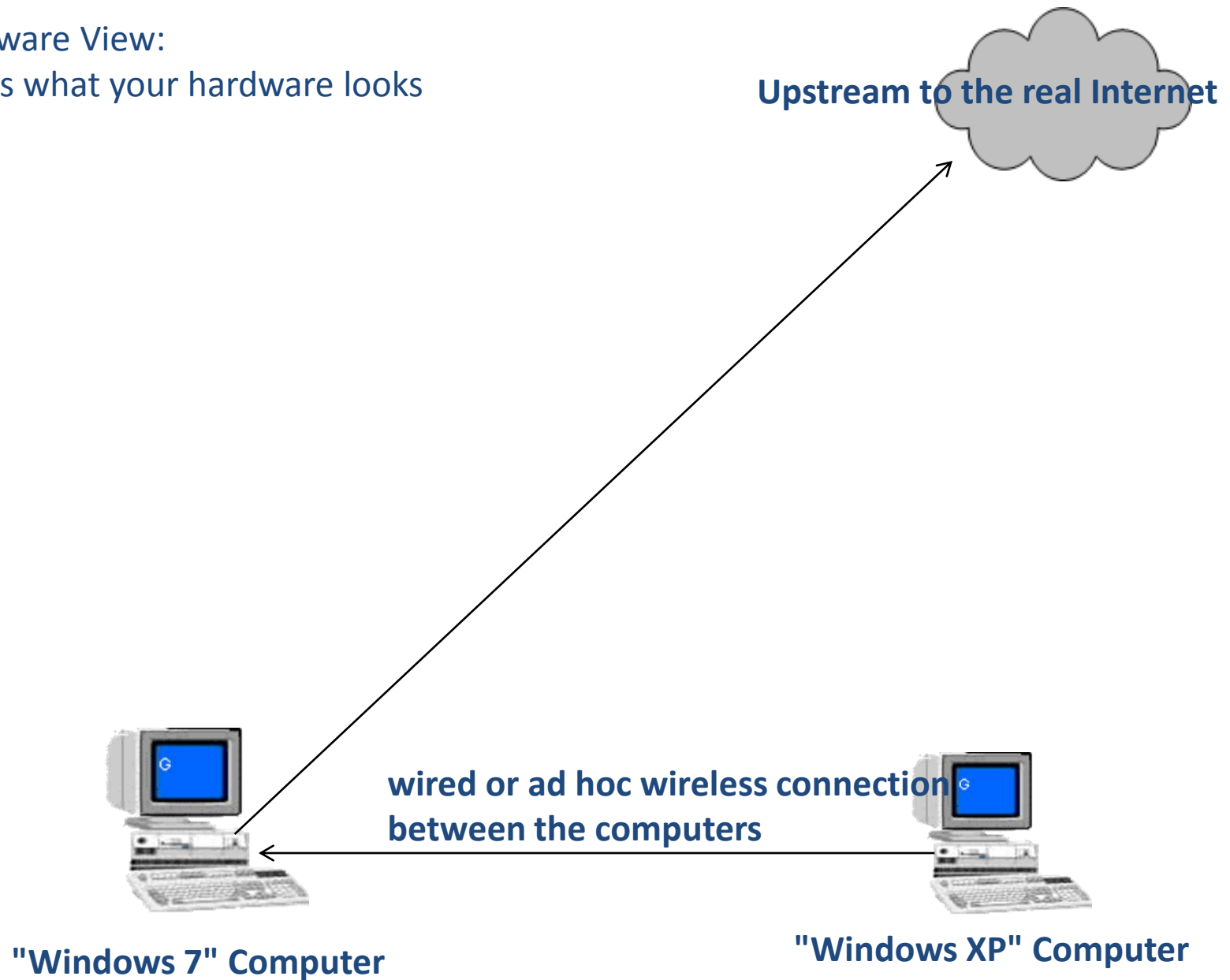


**You wish to connect the new computer to the original computer in order to give the new computer access to the Internet and to share files/printers.**



Hardware View:

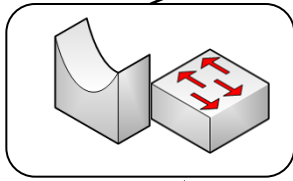
This is what your hardware looks like:



# Physical View of the (virtual) Windows' "Network Bridge"

Real "Local Area Network" (LAN)

Upstream to the real Internet



Virtual Windows "Network Bridge"



"Windows 7" Computer

Two real network adapters in the "Windows 7" real computer but three virtual network adapters inside the virtual Windows "Network Bridge"  
(Virtual network devices can have more virtual network adapters than in your physical network.)



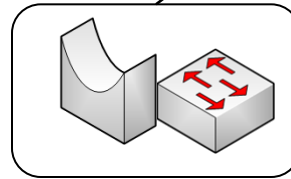
"Windows XP" Computer

# Logical View of the "virtual" Windows "Network Bridge"-- it acts like it exists independently of either computer

Upstream to the real Internet



Real "Local Area Network" ("LAN")



Virtual Windows "Network Bridge"



"Windows 7" Computer accesses the Internet and the other computer through the virtual "Network Bridge"



"Windows XP" Computer accesses the Internet and the other computer through the virtual "Network Bridge"

# WINDOWS' "NETWORK BRIDGE"

For "Windows XP", see

<http://www.techrepublic.com/article/get-it-done-connect-lans-with-windows-xps-network-bridge/5034572>

and

<http://www.homenethelp.com/web/howto/windows-xp-bridge-setup.asp>



# WINDOWS' "NETWORK BRIDGE"

- Microsoft's official documentation for using "Network Bridge" in "Windows 7" is located at <http://windows.microsoft.com/en-US/windows7/Create-a-network-bridge>