

# DETAILED NOTES ON THE " 'WINDOWS DEVELOPERS PREVIEW' PRE-BETA"

## HIGH-LEVEL EXECUTIVE SUMMARY:

The "Windows 8 Developers Preview", which is also known as "Windows 8 Pre-beta" provides us with a look into the rapidly-approaching future of the "Windows" operating system. "Windows 8" will have both the old, legacy "Desktop" user interface and the new "Metro" "Start" screen. "Metro" is Microsoft's unified user interface that will be inside Microsoft's future operating systems for computers, tablets, cell phones, and PDAs.

## PUBLIC AVAILABILITY OF THE "WINDOWS 8" PRE-BETA

The "Windows Developers Preview" pre-beta of "Windows 8" became available to the general public on September 13, 2011 at 8pm Pacific Daylight Saving Time.

To download a copy, go to

<http://msdn.microsoft.com/en-us/windows/apps/br229516>

See also

[http://www.computerworld.com/s/article/9219991/Microsoft\\_opens\\_Windows\\_8\\_preview\\_to\\_all?taxonomyId=125](http://www.computerworld.com/s/article/9219991/Microsoft_opens_Windows_8_preview_to_all?taxonomyId=125)

and

<http://msdn.microsoft.com/en-us/windows/apps/>

# "PRODUCT KEY" FOR THE "WINDOWS 8 PRE-BETA"

According to "Michael" of "Microsoft Support", the product key for activating "Windows 8 Pre-beta" is

**6RH4V-HNTWC-JQKG8-RFR3R-36498**

References:

<http://social.msdn.microsoft.com/Forums/en-US/windowsdeveloperpreviewgeneral/thread/ea402fb2-7192-4599-b999-22ad6b28c55a>

and

<http://www.windows8news.com/2011/09/18/windows-8-developer-preview-product-keys/>

and

<http://news.softpedia.com/news/Installing-a-Product-Key-and-Activating-Windows-8-Developer-Preview-230933.shtml>

## BURNING AN INSTALLATION DVD WITH THE .ISO FILE FOR "WINDOWS 8 PRE-BETA"

If you are running "Windows 7..", use your right mouse button to perform a click on the .ISO file that you downloaded. Then select the "Windows Disc Image Burner" applet to burn an installation media DVD.

If you are running "Windows XP" or "Windows Vista", use the "ImgBurn" software program to burn an installation media DVD.

See

<http://www.geeksyrupe.com/tips/download-and-install-windows-8-developer-preview-on-windows-7/>

and

<http://palacedeleon.com/tutorial-how-to-install-windows-8-developer-preview.html>

# WAYS FOR YOU TO TRY OUT THE "WINDOWS 8 PRE-BETA"

Both the 64-bit and the 32-bit versions of "Windows Developers Preview" pre-beta of "Windows 8" will install easily into a virtual machine in "Oracle VM VirtualBox 4.1" running in a "Windows.." host.

Both the 64-bit and the 32-bit versions of "Windows Developers Preview" pre-beta of "Windows 8" will install easily into a virtual machine in "VMware Player 4" running in a "Windows.." host.

In contrast, both the 64-bit and 32-bit versions of the "Windows Developers Preview" will fail to to install into a virtual machine in "Windows Virtual PC", "Microsoft Virtual PC 2007", and "VMware Player 3".

## INSTALLING "WINDOWS 8 PREVIEW" INTO A REAL, PHYSICAL COMPUTER

If you have a spare computer handy, you can install "Windows 8 Preview" into it.

See

<http://www.infogenra.com/how-to-install-microsoft-windows-8-on-your-system.html>

and

<http://www.techradar.com/news/software/operating-systems/how-to-install-windows-8-developer-preview-1027011>

# INSTRUCTIONS FOR INSTALLING "WINDOW 8 PREBETA" INTO A VIRTUAL MACHINE IN "ORACLE VM VIRTUALBOX" IN A "WINDOWS.." HOST COMPUTER

See

<http://blogs.msdn.com/b/b8/archive/2011/09/16/running-windows-8-developer-preview-in-a-virtual-environment.aspx>

and

<http://www.howtogeek.com/74515/how-to-test-drive-windows-8-in-virtualbox/>

and

<http://dottech.org/tipsntricks/23645/how-to-install-windows-8-on-virtualbox/>

and

<http://www.addictivetips.com/windows-tips/how-to-install-windows-8-on-virtualbox/#more-74050>

and

<http://www.windows7hacker.com/index.php/2011/09/install-windows-8-developer-preview-on-virtualbox/>

and

<http://www.windows8news.com/2011/09/14/install-windows-8-developer-preview/>

and

<http://techpp.com/2011/09/14/guide-to-install-windows-8-on-virtualbox/>

and

<http://www.abctrick.com/2011/09/complete-guide-to-install-windows-8.html>

and

<http://geekswithblogs.net/gjfox/archive/2011/09/15/installation-guide-to-install-windows-8-developer-preview-on-virtual.aspx>

and

<http://searchdaily.net/tag/windows-8-download-and-installation-guide>

and

<http://debugmode.net/2011/09/15/step-by-step-installation-guide-to-install-windows-8-developer-preview-on-virtual-box/>

# INSTRUCTIONS FOR INSTALLING "WINDOWS 8 PRE-BETA" INTO A VIRTUAL MACHINE IN "VMWARE PLAYER 4" (FREE) IN A "WINDOWS.." HOST COMPUTER

<http://www.windows7hacker.com/index.php/2011/10/installing-windows-8-developer-preview-on-vmware-player-in-windows-7/>

# INSTRUCTIONS FOR INSTALLING "WINDOW 8 PRE-BETA" INTO A "VHD" VIRTUAL HARD DISK FILE SO THAT YOU CAN DUAL BOOT BETWEEN "WINDOWS 7" AND "WINDOWS 8 PRE-BETA"

See

<http://www.hanselman.com/blog/GuideToInstallingAndBootingWindows8DeveloperPreviewOffAVHDVirtualHardDisk.aspx>

and

<http://blog.concurrency.com/infrastructure/dual-boot-windows-8-from-vhd-using-windows-setup/>

and

<http://muskilashan.com/index.php?topic=834.0>

and

<http://www.blogsolute.com/install-windows-8-vhd-boot/18400/>

and

<http://www.intowindows.com/how-to-boot-windows-8-from-vhd-without-using-command-prompt/>

# EXPIRATION DATE

The expiration date for the "Windows 8 Pre-beta" is March 12, 2012.

See

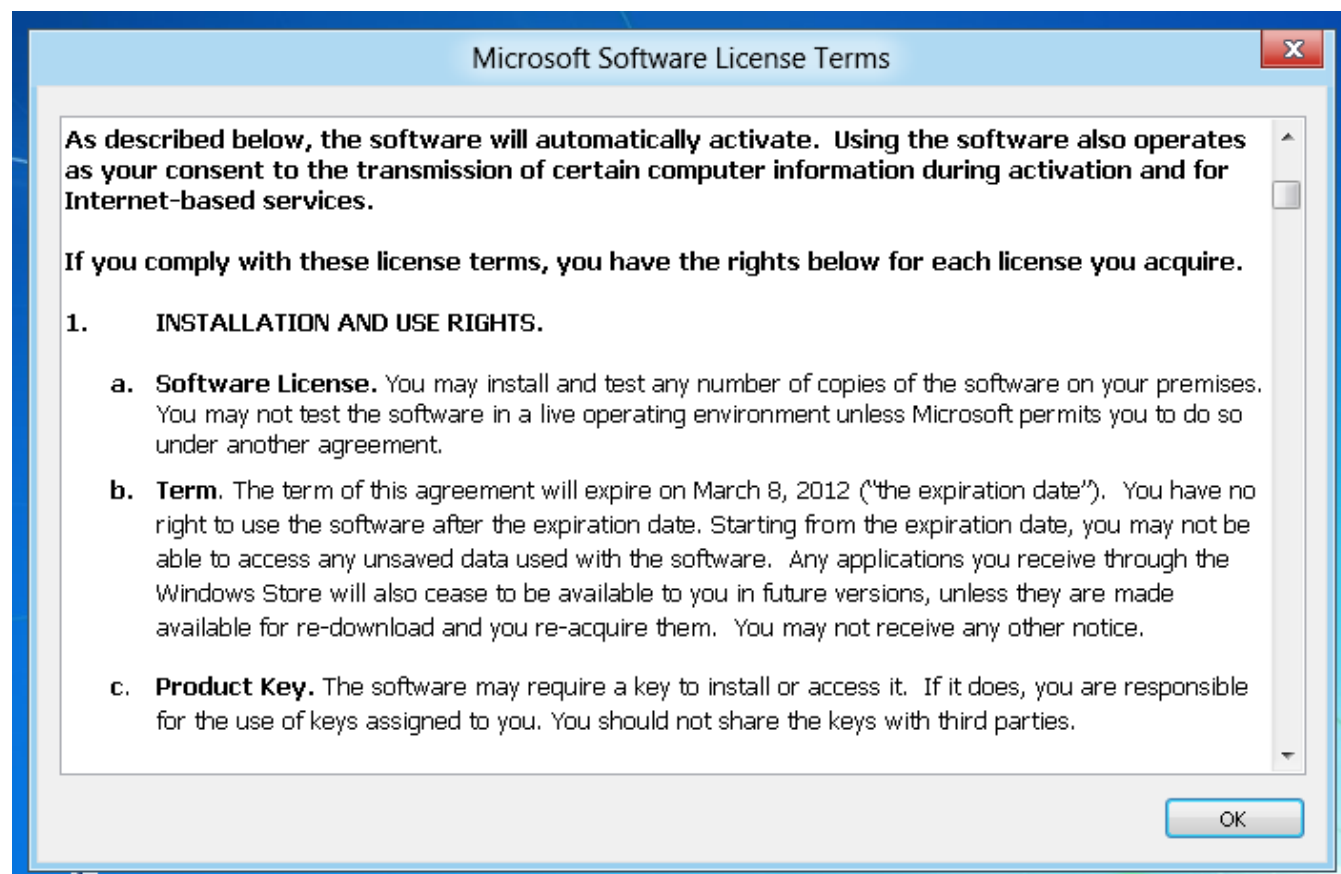
<http://news.softpedia.com/news/Don-t-Use-Expired-Windows-8-Developer-Preview-Build-8102-M3-After-March-8-2012-224506.shtml>

and

<http://techblog.ginktage.com/2011/09/when-does-windows-8-developer-preview-build-expires/>

and

<http://techdows.com/2011/09/when-windows-8-developer-preview-will-expire.html>



# DUAL BOOTING BETWEEN "WINDOWS 8 PRE-BETA" AND "WINDOWS 7" OR "WINDOWS VISTA"

<http://techwalls.com/news/install-dual-boot-microsoft-windows-8/>

and

<http://lifehacker.com/5840387/how-to-dual+boot-windows-7-and-windows-8-side-by-side>  
and  
<http://www.howtogeek.com/74335/how-to-dual-boot-windows-7-and-windows-8/>  
and  
<http://www.itworld.com/software/203877/dual-boot-windows-7-and-windows-8>  
and  
<http://www.itproportal.com/2011/10/28/how-dual-boot-windows-8-and-windows-7/>  
and  
<http://www.redmondpie.com/how-to-dual-boot-windows-8-with-windows-7/>  
and  
<http://www.akascope.com/2011/09/17/dual-boot-windows-8-windows-7/>  
and  
<http://www.thewindowsclub.com/dual-boot-windows-8-windows-7-pc>  
and  
<http://mobilitydigest.com/how-to-dual-boot-with-windows-8-in-5-easy-steps/>  
and  
<http://jameschambers.com/blog/got-windows-7-here-rsquo-s-an-easy-way-to-dual-boot-windows-8>  
and  
<http://www.sempf.net/post/Dual-boot-Windows-7-and-Windows-8.aspx>

## RESOLVING PROBLEMS CAUSED BY SETTING UP DUAL BOOTING BETWEEN "WINDOWS 8 PRE-BETA" AND "WINDOWS 7" OR "WINDOWS VISTA"

<http://samueloh.me/windows-7-windows-8-dp-dual-boot-glitch>  
and  
<http://www.bench3.com/2011/08/windows-8-starts-by-default-on-dual.html>  
and  
<http://www.borncity.com/blog/2011/10/30/windows-8-to-go-with-dual-boot/>  
and  
<http://techwalls.com/news/install-dual-boot-microsoft-windows-8/>  
and  
<http://www.techstuffs.net/2011/09/how-to-install-and-dual-boot-windows-8.html>

## REMOVING "WINDOWS 8 PRE-BETA" FROM A DUAL BOOT SETUP WITH "WINDOWS 7"

<http://www.windows8news.com/2011/10/07/uninstall-windows-8-developer-preview-dualboot-setup/>

and

<http://www.eightforums.com/tutorials/2372-dual-boot-windows-7-windows-8-delete-windows-8-developer-preview.html>

and

<http://www.chasingeyes.com/how-to-uninstall-windows-8-from-dual-boot.html>

and

<http://www.addictivetips.com/windows-tips/how-to-uninstall-windows-8/>

## DUAL BOOTING BETWEEN "WINDOWS 8 PRE-BETA" AND "WINDOWS XP"

<http://boshdirect.com/blogs/tech/dual-boot-windows-xp-and-windows-8.html>

## DUAL BOOTING BETWEEN "WINDOWS 8 PRE-BETA" AND "MACINTOSH OS X" USING "BOOTCAMP"

<http://www.forumswindows8.com/installation-setup/installations-images-dual-booting-osx-10-a-4680.htm>

and

<https://discussions.apple.com/thread/3325631?start=0&tstart=0>

and

<http://gigaom.com/apple/how-to-install-windows-8-preview-using-boot-camp/>

and

<http://pcwizkid.blogspot.com/2008/02/dual-boot-windows-on-your-mac-with.html>

## INSTALLING "LINUX" AS A DUAL BOOT "WUBI" INSTALLATION" INSIDE "WINDOWS 8 PRE-BETA"

<http://google-ite101.blogspot.com/2011/10/windows-8-linux-dual-bootwubi.html>

## DUAL BOOTING BETWEEN "WINDOWS 8 PRE-BETA" AND "UBUNTU 11.04"

<http://www.addictivetips.com/ubuntu-linux-tips/how-to-dual-boot-ubuntu-11-04-with-windows-7/>

and

[http://www.youtube.com/watch?v=ZL-Jr\\_w8ilY&noredirect=1](http://www.youtube.com/watch?v=ZL-Jr_w8ilY&noredirect=1)

and

<http://www.thegeeksolutions.in/2011/08/install-dual-boot-of-linux-ubuntu-1104.html>

# NEW FEATURES IN "WINDOWS 8"

See

<http://www.howtogeek.com/74089/windows-8-the-gigantic-how-to-geek-screenshot-tour/>

and

<http://thinksb.com/2011/09/a-look-at-windows-8/>

and

<http://www.foxnews.com/scitech/2011/09/14/windows-8-developer-preview-hands-on-inside-all-new-features/>

and

<http://www.istartedsomething.com/20110914/windows-8-101-tips-tricks-for-new-start-experience/>

and

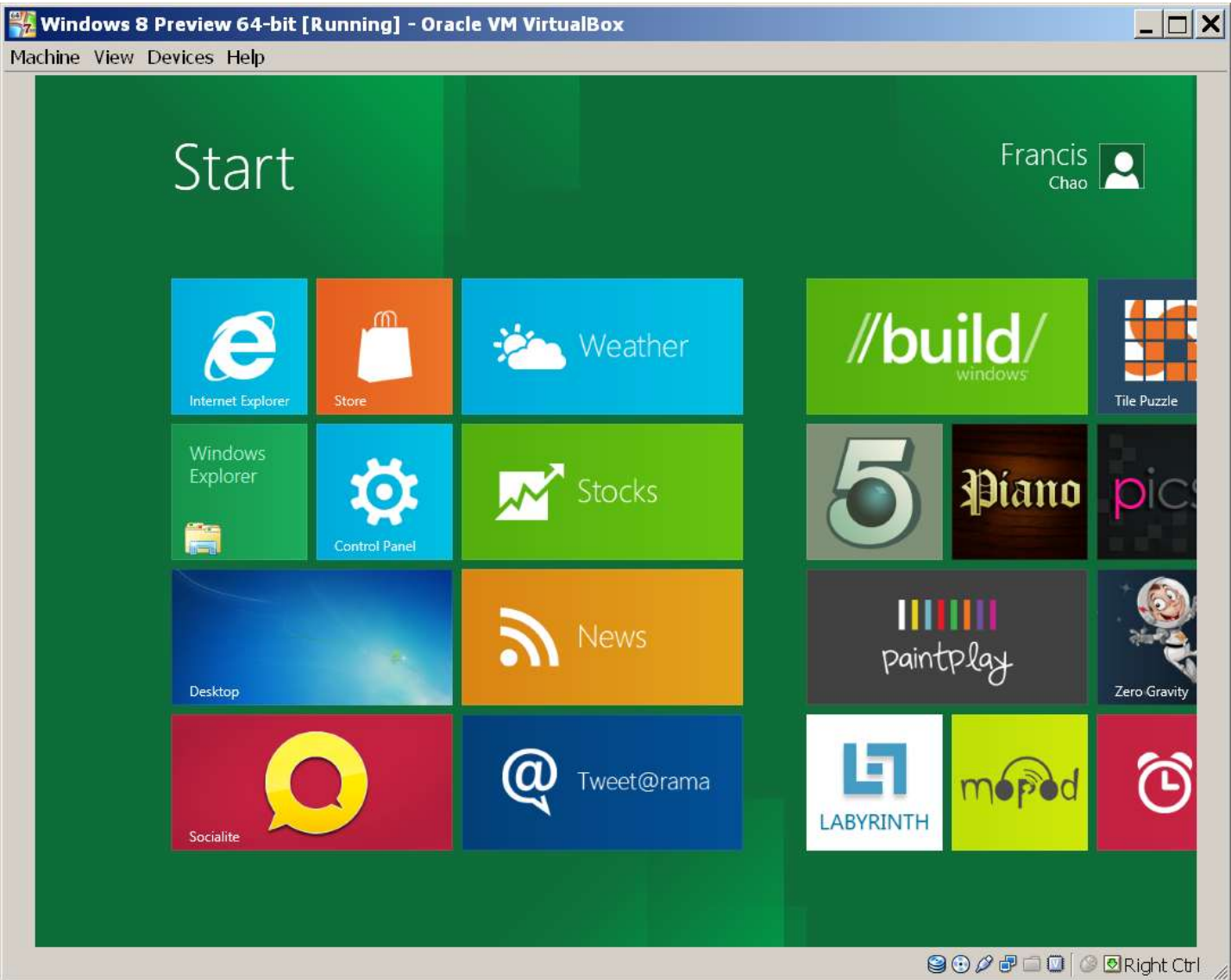
<http://www.winrumors.com/windows-8-tips-and-tricks-for-mousekeyboard-users/>

and

<http://lifehacker.com/5841764/windows-8-in+depth-part-1-the-metro-ui>

## METRO "START" SCREEN

In "Windows 8", the Metro "Start" screen replaces the Windows "Start menu" as the default menu for the end-user.



See

<http://www.newsby.me/info/tag/metro-screen/>

## "DESKTOP"

In "Windows 8", the legacy "Desktop" interface is still available and a critical part of the operating system:

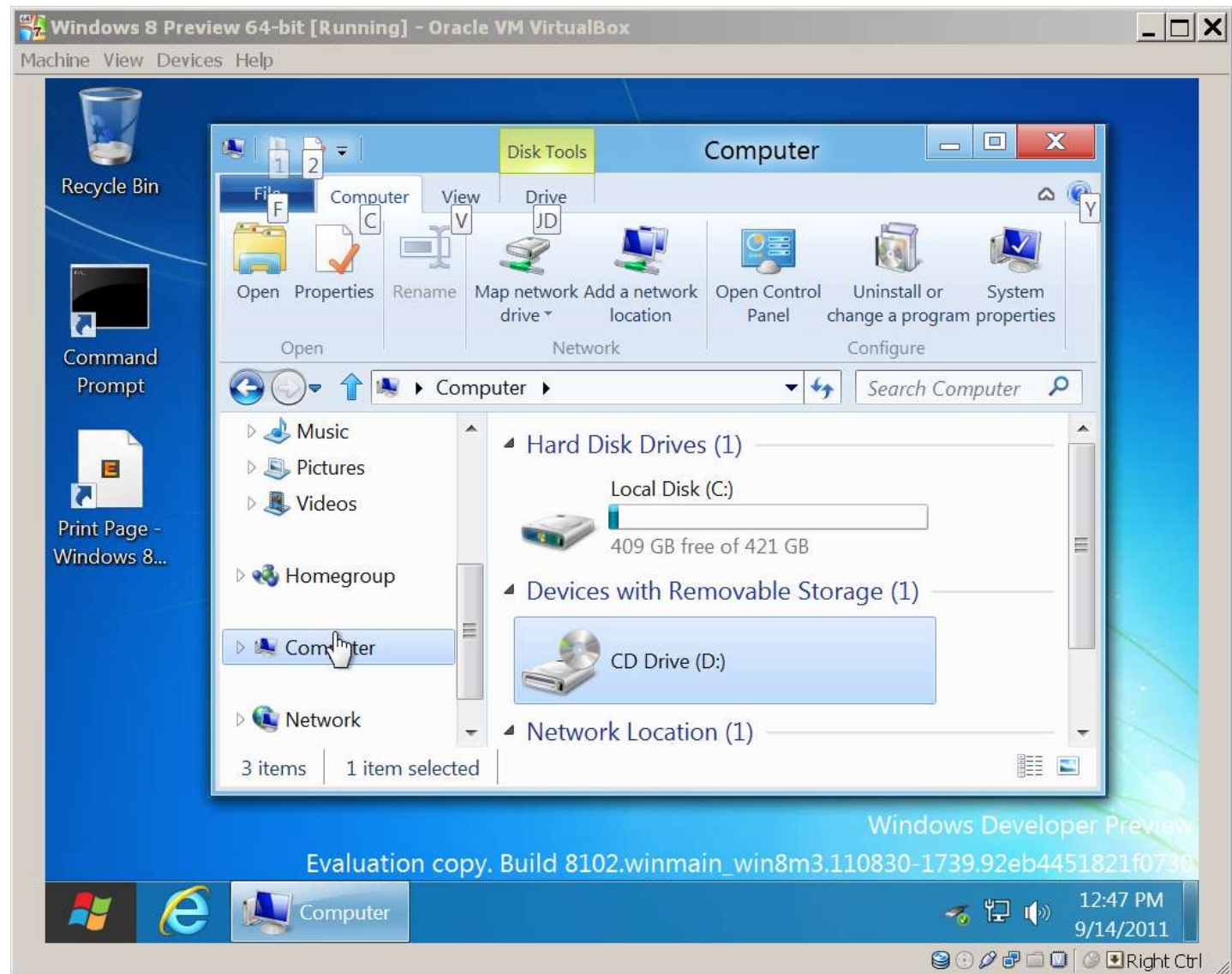
"Desktop" tile in Metro "Start" screen

or

Windows key takes you from Metro "Start" screen to the "Desktop" when no "Metro Style Apps" are running.

or

Windows key + M --> Minimize all open Windows  
and go to "Desktop View"



## "METRO STYLE APPS"

In "Windows 8", the term "Apps" is used to refer to programs for "Windows" PCs for the first time.

In the past, "Apps" used to refer to programs for cell phones, tablets, and personal digital assistants.

"Metro Style Apps" only display in full screen from inside the Metro "Start" screen.

Alt + F4 does not work for "Metro Style Apps":

(Alt + F4 still works in "Desktop" applications running in "Desktop View".)

### **Developing "Metro Style Apps":**

See

<http://peterdn.com/post/To-make-a-Metro-Appx-Package-from-scratch-you-must-first-e280a6.aspx>

"Metro Style Apps" use "WinRT APIs".

"Metro Style Apps" are located in a special hard-to-access "Applications" folder:

**C:\Program Files\Applications\**

This folder has very strange permissions.

**"Metro Style Apps" fail to start if screen resolution is less than 1024 x 768:**

See

<http://www.edbott.com/weblog/2011/09/windows-8-apps-wont-open-heres-the-fix/>

and

<http://msdn.microsoft.com/en-us/windows/apps/br229516>

See Microsoft's spin on "Metro style apps" at

<http://msdn.microsoft.com/en-us/library/windows/apps/hh464920%28v=vs.85%29.aspx>

In "Metro Style Apps", right clicking in unused space brings up bottom bar.

### **Minimizing "Metro Style Apps":**

To "minimize" a "Metro Style App" and return to the "Metro Start Screen":

METHOD 1:

Hover the mouse pointer over the lower left-hand corner of the screen until "Charms" are displayed; then click on the Windows "Start" charm

OR

METHOD 2:

Press once on the "Windows" key

OR

METHOD 3:

Press "Ctrl" + "Esc" on the keyboard

**To return to a "Metro Style App":**

Press "Alt" + "Tab" on the keyboard

**"Metro Style Apps" do not have a close or exit button:**

A "Metro Style App" will automatically close after you minimize it and do not use it for a while.

If you wish to close a "Metro Style App" manually, press

Ctrl + Shift + Esc on the keyboard.

A "Windows Task Manager" will be displayed.

Right click on the "Metro Style App" that you wish to close.

Click on "End Task" in the popup context menu.

## LEGACY DESKTOP APPLICATIONS

Legacy "Desktop Applications" will start regardless of your screen resolution setting.

Legacy "Desktop Applications" will automatically start in the "Desktop" interface.

"Microsoft Office 2010" and its predecessors are all legacy desktop applications.

## "CHARMS"

To bring up "Charms":  
press the Windows key + c key  
or

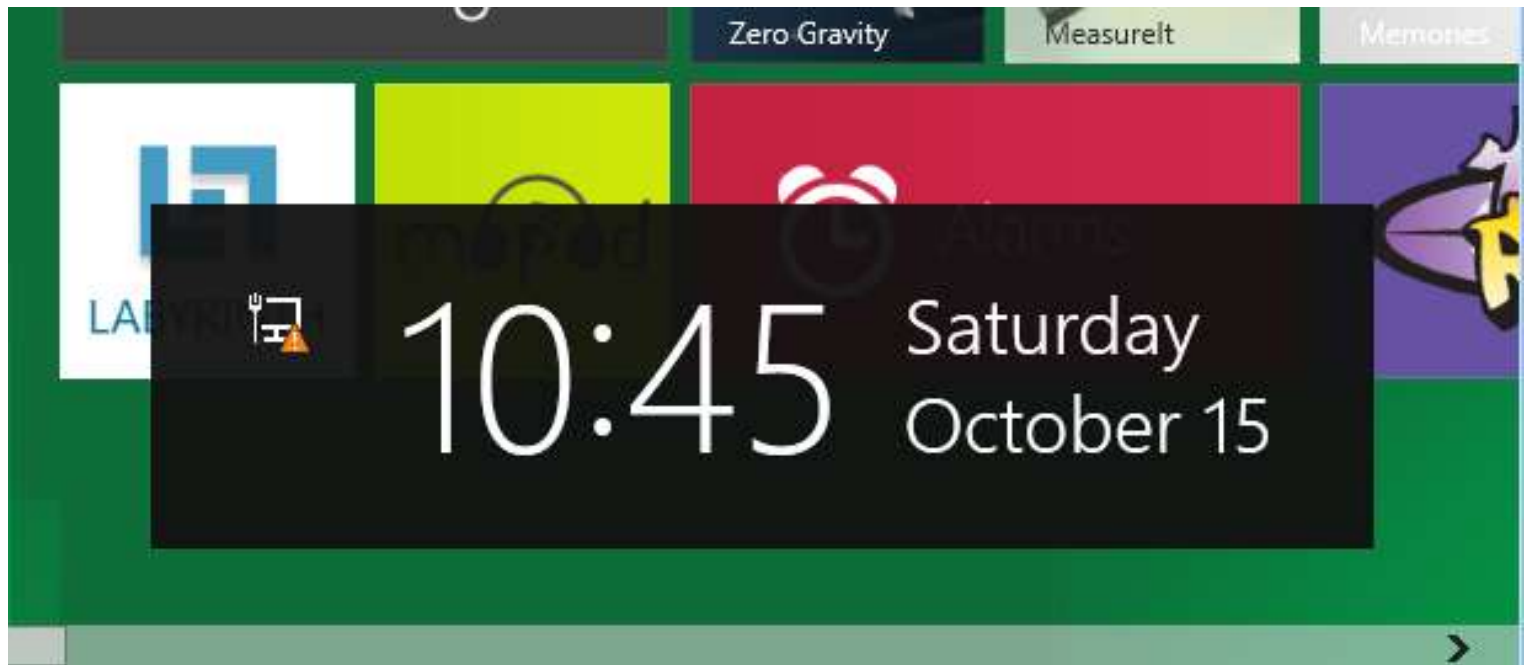
mouse over the lower left-hand corner of monitor screen:

(If you are running "Windows 8 Pre-beta" in a virtual machine, you might have to use the vertical and horizontal scroll bars of the virtual machine window to get to the real lower left-hand corner of the the monitor screen.)



Your five "charms" are:  
Settings, Devices, Share, Search, and Start.

Bringing up "charms" also brings up a time and date box in the lower right-hand area of the monitor screen:



When you are inside a "Metro Style App", bringing up a "charm" usually brings up some icons that are specific to the "Metro Style App" in the (right) side bar:



Microsoft has applied for a trademark for "Charms". "Charms" can be accessed from "Metro style apps", the "Metro" "Start" screen, and the legacy "Desktop".

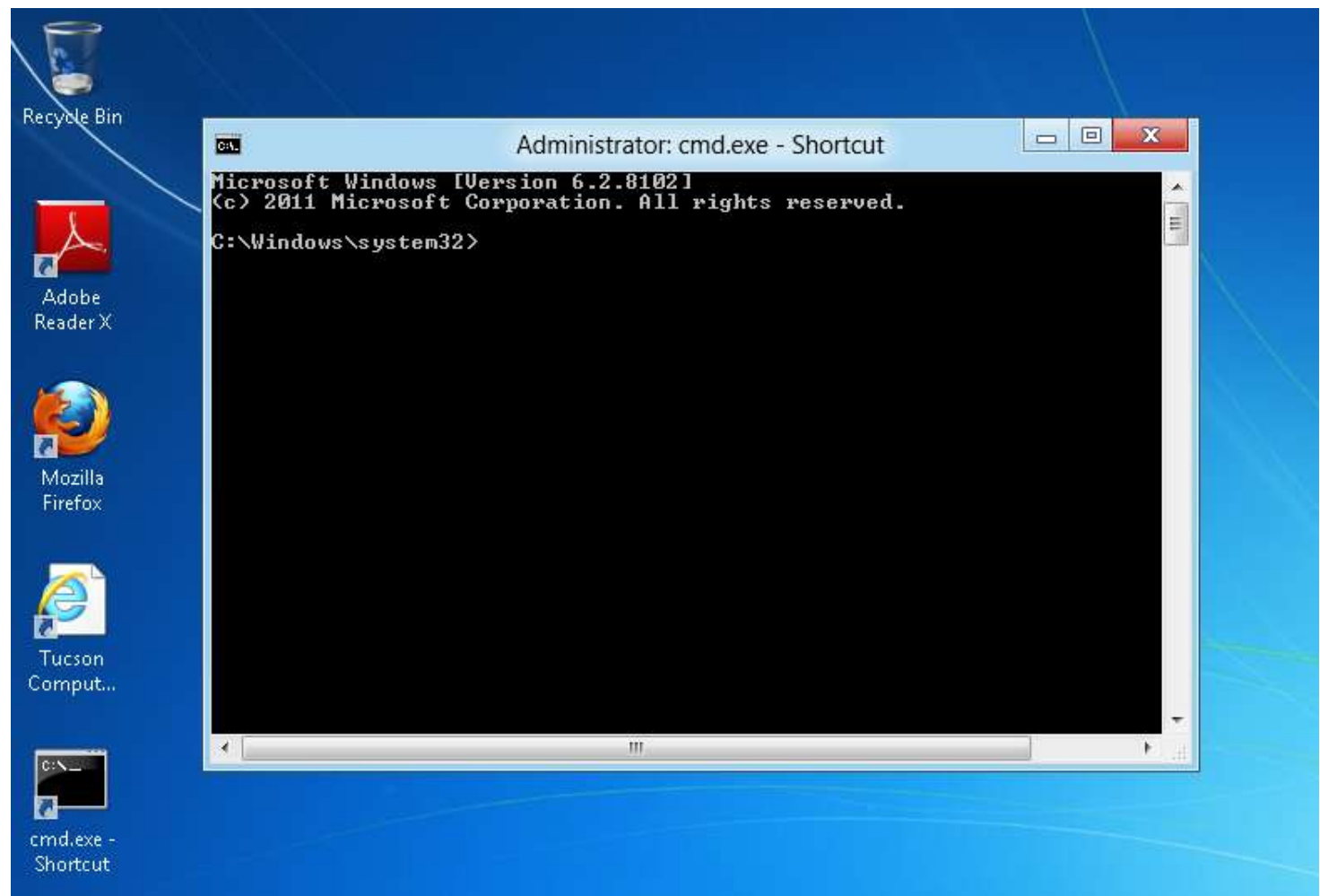
THUMBNAIL OF MOST RECENTLY-USED APP

A thumbnail of your most recently-used app is displayed if you drag your mouse cursor to the left edge of the screen. If your most recently-used app is one that runs inside the legacy "Desktop", you will get a thumbnail of the "Desktop" showing your most recently-used app displayed inside the thumbnail of the "Desktop".



IMPORTANCE OF THE "COMMAND PROMPT"

"Command Prompt" is a critical feature of "Windows 8" because of the default loss of the "Start" menu.



A "Command Prompt" window always runs inside the legacy "Desktop" in "Windows 8".

See

<http://www.mywindowsclub.com/resources/5085-How-open-command-prompt-Windows.aspx>

A "command prompt" is useless if you do not run it as an administrator. You cannot set "cmd.exe" to automatically run as administrator.

Trick to get cmd.exe to always run as administrator:

Use the right mouse button to drag cmd.exe to the desktop.

Right click on the shortcut to cmd.exe.

Click on "Properties" in the pop-up utility menu.

Click on "Advanced" in the "Shortcut" tab.

Put a checkmark in "Run as administrator".

Click on the "OK" button.

Click on the "OK" button.

Use the "Shortcut to cmd.exe" whenever you need to open up a "command prompt" window and then you will be running "cmd.exe" as an administrator.

## SHUTTING DOWN THE COMPUTER

Bring up "Charms".  
Click on the "Settings" charm.  
Click on "Power" in the sidebar.  
Click on "Shut down" in the pop-up utility menu.

OR

Create a shutdown shortcut in Desktop

AND

create a « shutdown tile in the Metro "Start" screen :

See

<http://www.mywindowsclub.com/resources/5103-How-create-Shutdown-Shortcut-Windows.aspx>

"INTERNET EXPLORER 10 BETA"

"Internet Explorer 10 beta" is bundled into "Windows 8 Pre-beta".

"Internet Explorer 10 beta" has a ribbon bar.

You cannot install any earlier version of "Internet Explorer" directly into "Windows 8 Pre-beta". If you wish to run a earlier version of "Internet Explorer" in "Windows 8 Pre-beta", you can run it inside a virtual machine running inside "Hyper-V", since "Hyper-V" is bundled in "Windows 8 Pre-beta". The virtual machine will have to run a version of "Windows.." prior to "Windows 8 Pre-beta".

"Internet Explorer 10" is actually two inter-related programs:

"Metro Internet Explorer"

and

"Desktop View Internet Explorer"

"Metro Internet Explorer" does not permit add-ons such as flash, Java Runtime, and Silverlight Environment add-on. This is a showstopper for many Web sites.

All Internet Shortcuts (.URL) and "Pinned Site Shortcuts" (.web, .website) on the Desktop start in "Metro Internet Explorer" when double-clicked.

To start a .URL or .Web file in Firefox:

drag and drop it on top of a Firefox shortcut.

or

right click, click on "Open with", and click on "Firefox".

Do not make shortcuts to Internet Explorer executables.

It causes "Metro Internet Explorer" tile in the "Metro" "Start" screen to disappear and Internet shortcut tiles to open in "Desktop View Internet Explorer".

If you start in "Metro Internet Explorer" and want to switch to "Desktop View Internet Explorer":

Right click on Web page.

A bottom bar will be displayed.

Click on the page-with-folded-corner button.

Click on "Use desktop view" in the pop-up utility menu.

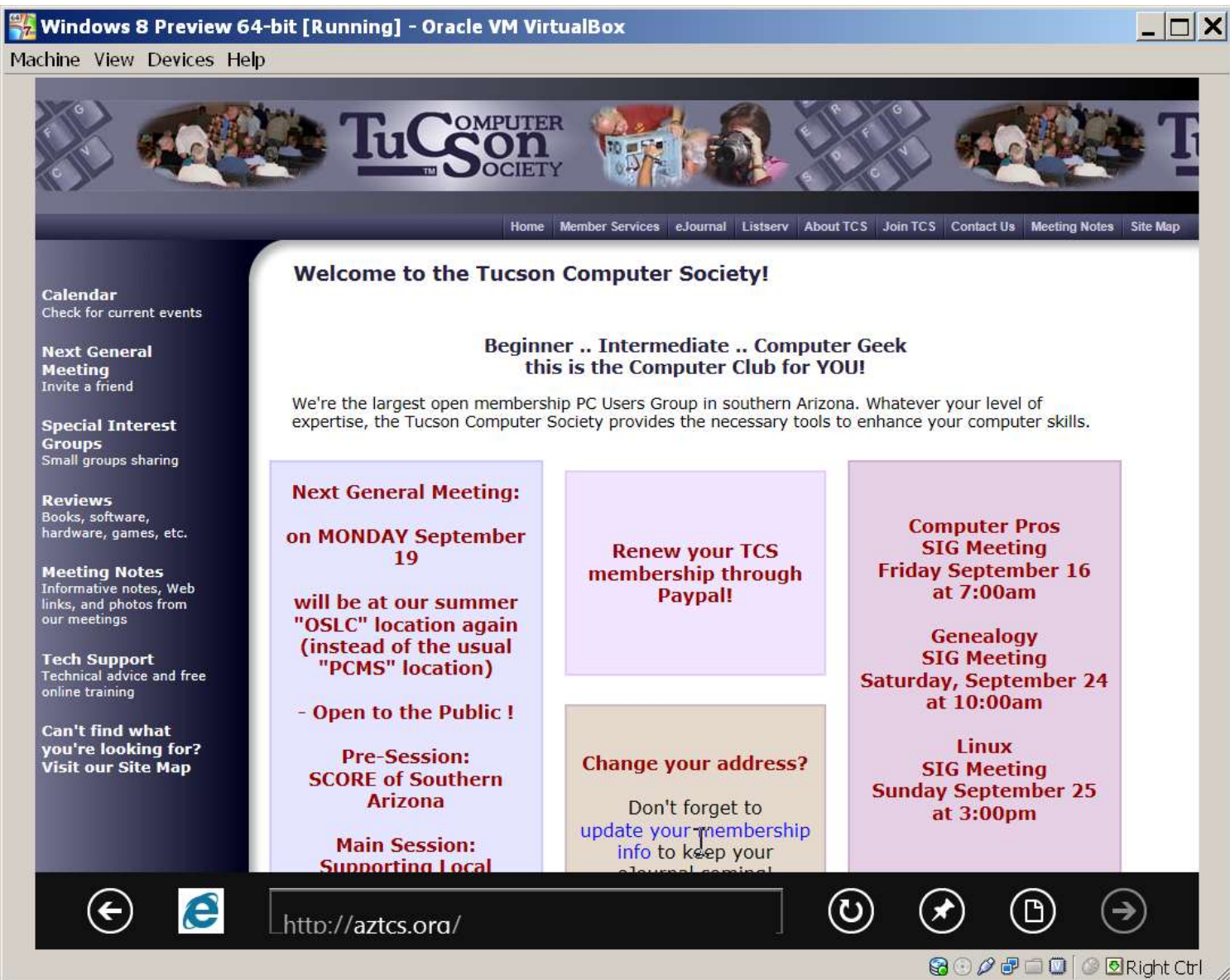
Like "Internet Explorer 9" and "Internet Explorer 8", "Desktop View Internet Explorer" has a 32-bit version and a 64-bit version.

However, unlike "Internet Explorer 9" and "Internet Explorer 8",

you cannot selectively start the 32-bit version or the 64-bit version of "Desktop View Internet Explorer" by clicking on the desired version.

Regardless of whether you click on "iexplore.exe in "Program Files" or the "iexplore .exe" in "Program Files (x86)", the version of "Desktop View Internet Explorer" that is selected in the "Security" options screen of "Desktop View Internet Explorer" is that one that will run.

**"INTERNET EXPLORER 10" WITHIN THE "METRO" INTERFACE" OF "WINDOWS 8" :**



\*

"INTERNET EXPLORER 10" WITHIN THE LEGACY "DESKTOP" VIEW OF "WINDOWS 8":

Recycle Bin

Command Prompt

Print Page - Windows 8...

http://aztcs.org/ Tucson Comput...

**Tucson COMPUTER SOCIETY**

Home Member Services eJournal Listserv About TCS Join TCS Contact Us Meeting Notes Site Map

**Welcome to the Tucson Computer Society!**

**Beginner .. Intermediate .. Computer Geek  
this is the Computer Club for YOU!**

We're the largest open membership PC Users Group in southern Arizona. Whatever your level of expertise, the Tucson Computer Society provides the necessary tools to enhance your computer skills.

**Next General Meeting:**  
on **MONDAY September 19**  
will be at our summer "OSLC" location again (instead of the usual "PCMS" location)  
- Open to the Public !  
**Pre-Session: SCORE of Southern Arizona**  
**Main Session: Supporting Local Business and How To Get Involved**

**Renew your TCS membership through Paypal!**

**Change your address?**  
Don't forget to update your membership info to keep your eJournal coming!

**Computer Pros SIG Meeting**  
Friday September 16 at 7:00am

**Genealogy SIG Meeting**  
Saturday, September 24 at 10:00am

**Linux SIG Meeting**  
Sunday September 25 at 3:00pm

**Calendar**  
Check for current events

**Next General Meeting**  
Invite a friend

**Special Interest Groups**  
Small groups sharing

**Reviews**  
Books, software, hardware, games, etc.

**Meeting Notes**  
Informative notes, Web links, and photos from our meetings

**Tech Support**  
Technical advice and free online training

**Can't find what you're looking for?**  
Visit our Site Map

Tucson C...

12:51 PM 9/14/2011

Right Ctrl

# FIXING STREAMING FLASH VIDEOS IN “DESKTOP” WEB BROWSERS

If Adobe Flash videos do not play in “Desktop”-based Web browsers (such as “Desktop View Internet Explorer 10 Beta”, “Google Chrome”, “Firefox”), perform the fix at

[http://aztcs.org/meeting\\_notes/winhardsig/AdobeFlashPlayer/AdobeFlashPlayer.pdf](http://aztcs.org/meeting_notes/winhardsig/AdobeFlashPlayer/AdobeFlashPlayer.pdf)

# SKETCH-BASED PASSWORD AUTHENTICATION

See

<http://officialwindows8.com/tag/developer-preview/page/3/>

# CREATING TILES IN THE METRO “START” SCREEN

See

<http://www.exploringwindows8.com/2011/09/29/add-applicationsapps-to-windows-8-metro-desktop/>

and

<http://www.mmo-champion.com/threads/977781-Windows-8-Adding-Shortcuts-to-Metro-UI>

and

## "WINDOWS TO GO" = "PORTABLE WORKSPACE"

You can make a bootable USB flash drive or USB hard drive that can boot up any computer with a portable copy of "Windows 8 Pre-beta". When this feature is finally completed, this method of booting will protect you from accessing or modifying any files or folders that are on the internal hard drive(s) of the computer that you use. When this feature is completed, a "Portable Workspace Creator" applet in "Windows 8" can be used to create BitLocker-encrypted USB flash drives that can be used to boot up any computer that has an adequate processor and RAM. The "Portable Workspace Creator" applet is not available inside the "Windows 8 Pre-beta".

# LIMITATIONS OF THE "WINDOWS TO GO" IMPLEMENTATION IN "WINDOWS 8 PRE-BETA"

At the present time, the half-baked "Windows To Go" capability of "Windows 8 Pre-beta.." is functional enough for you to try out this future feature of "Windows 8.." with the following three limitations:

## Limitation 1:

BitLocker encryption is not placed on the bootable hard drive or USB flash drive when you create a bootable "Windows To Go" USB hard drive, using "Windows 8 Pre-beta".

## Limitation 2:

The "Portable Workspace Creator" applet is not available inside the "Windows 8 Pre-beta". According to Microsoft's blogs, this feature has been available in some early non-public "Pre-betas" and this feature will be definitely available in the future "Release to Manufacturing" version of "Windows 8".

and

## Limitation 3:

If you boot up "Computer A" with a bootable "Windows To Go" external hard drive or USB flash drive and then you boot up "Computer B" with the same "Windows To Go" external hard drive or USB flash drive, then you will be unable to boot up "Computer A" with the same bootable "Windows To Go" external hard drive or USB flash drive.

Because of "Limitation 3", right after you create the bootable "Windows To Go" external hard drive or USB flash drive and before you use it to boot up a computer, you should use "Acronis True Image Home.." or "Clonezilla" to immediately create an image of your bootable "Windows To Go" external hard drive or USB flash drive. This hard drive image can then be used to restore the bootable "Windows To Go" hard drive if and when it fails to boot up a target computer.

Hopefully, these three limitations will not exist in the future "Release to Manufacturing" production version of "Windows 8" that is sold in 2012.

For more information on "Windows To Go", see

[http://technet.microsoft.com/en-us/library/cc766465\(WS.10\).aspx](http://technet.microsoft.com/en-us/library/cc766465(WS.10).aspx)

and

[http://en.wikipedia.org/wiki/Windows\\_To\\_Go](http://en.wikipedia.org/wiki/Windows_To_Go)

## CREATING A "WINDOWS TO GO" BOOTABLE EXTERNAL USB HARD DRIVE OR A "WINDOWS TO GO" BOOTABLE USB FLASH DRIVE

Because of "Limitation 2", the current process for creating a bootable "Windows To Go" bootable USB hard drive consists of the following procedure from within a command prompt window inside a "Windows 8 Pre-beta" virtual machine or physical computer:

Run a few "diskpart" commands.

Run the "imagex.exe" command.

Run the "bcdboot.exe" command.

For details of this process, see

<http://tweaks.com/windows/52279/how-to-create-a-windows-to-go-usb-drive/>

and

<http://www.borncity.com/blog/2011/09/21/creating-windows-8-to-go-on-a-16-gb-usb-stick/>

Use "Acronis True Image Home.." or "Clonezilla" to immediately create an image of your bootable "Windows To Go" USB external hard drive or USB flash drive.

If you are using a "USB flash drive" for your "Windows To Go" hard drive, use "Clonezilla" to create your backup image, since "Acronis True Image Home.." will not allow you to do this.

If you are using a USB external hard drive, you can either use "Acronis True Image Home.." or "Clone" to make your backup image.

If you boot up "Computer A" with your "Windows To Go" external USB hard drive and then you boot up "Computer B" with the same external USB hard drive, you will need to use the "Restore" capabilities of "Acronis True Image Home" or "Clonezilla" to restore your external USB hard drive before you can use your external USB hard drive to boot up "Computer A" again.

## OUR SUCCESSFUL AND FAILED ATTEMPTS TO TRY "WINDOWS TO GO"/"PORTABLE WORKSPACE"

The attendees of the "Windows 8/Hardware SIG" of the "Tucson Computer Society" have had great success in their attempts to use the above procedure to create bootable "Windows To Go" hard drives with external USB hard drives. We have successfully created bootable external hard drives from 9 different models of external hard drives/enclosures including:

a 10-year-old CompUSA USB IDE hard drive enclosure containing a 300-Gigabyte Western Digital IDE hard drive (that belongs in a museum)

a modern "Addonics" USB 2 / eSATA hard drive enclosure containing a 1-Terabyte Seagate SATA hard drive,

and

a brand-new Kingwin "USB 3" hard drive enclosure containing a 1-Gigabyte IBM SATA hard drive

However, we have failed in all of our attempts to use 32-Gigabyte "Sandisk" "Cruzer" USB flash drives to create bootable "Windows to Go" hard drives to run the 64-bit version of "Windows 8 Pre-beta". All of these attempts resulted in a USB flash drive that failed to boot.

We partially succeeded when we used a 32-Gigabyte "Sandisk" "Cruzer" USB flash drive to create a bootable "Windows To Go" drive that ran the 32-bit version "Windows 8 Pre-Beta". This 32 Gigabyte USB flash drive successfully booted up our Sony "VGN" "Core 2 Duo" laptop with "Windows 8 Pre-beta 32-bit". However, the bundled copy of "Internet Explorer 10 beta" failed to start in both the "Metro Internet Explorer" mode and in the legacy "Desktop" mode. As a workaround, we were able to run command-line FTP to mozilla.org and download the installation file for "Mozilla Firefox 7.0.1". After running this setup file, we were able to run "Mozilla Firefox.." to access the "Web".

A software developer named Steve Si has reported results similar to ours.

See

<https://sites.google.com/a/rmpreusb.com/www/tutorials/win8togo>

We know that Microsoft has been able to create bootable USB flash drives which run the 64-bit version of one of the versions of "Windows 8 Pre-beta", because they gave stacks of them to the software developers at the BUILD conference in Anaheim, California in September 2011.

See

<http://redmondmag.com/articles/2011/09/16/microsoft-unveils-windows-to-go-for-the-enterprise.aspx>

and

<http://www.thewindowsclub.com/windows-8-windows-feature-windows-8>

## MISCELLANEOUS FEATURES OF "WINDOWS 8"

### **Alt+Tab still works:**

Alt+Tab steps you through all open Metro and desktop windows and apps. In the future production RTM version of "Windows 8", the "Modern Reader" applet will open Adobe PDF files. "Modern Reader" is not available in "Windows 8 Pre-beta". It was found in some earlier betas of "Windows 8" that were released to developers.

### **Native "Mounting" of ISO Files:**

.ISO image files (ISO 9660 files that represent data CDs and data DVDs) can be mounted directly:

Just double-click on an .ISO file and a new "drive" appears in "Windows Explorer".  
or

right-click on the .ISO file and select "Mount" from the pop-up utility menu.

**For making PDF files, "PDF995" works but "Bullzip" does not work:**

See

<http://www.pdf995.com/>

**Microsoft's .NET Must Be Separately Installed:**

Microsoft's .NET must be separately installed if you have an app that needs it. It is not offered in "Windows Update" to "Windows 8 Pre-beta".

**Microsoft's disk "Error-checking" has been improved.**

**Hibernation is not available by default:**

If you prefer to get the "Hibernation" feature back, see

<http://www.intowindows.com/how-to-enable-hibernate-in-windows-8/>

## "METRO SEARCH" IDIOSYNCRACIES

"Metro Search" will only find some of the executable files that are inside C:\Windows

For example Metro "Search" will find "notepad.exe" but it will not find "shutdown.exe"

If Metro "Search" does not find a certain executable file and you wish to have a tile for this executable file, you can create a shortcut to the executable file and then place this new shortcut at

C:\ProgramData\Microsoft\Windows\Start Menu\  
or in a subdirectory of this location.

Any shortcut (that points to an executable file) that you place at this location (or in a subdirectory of this location) will have a "tile" in the Metro "Start" screen and "Metro Search" will be able to find the shortcut.

"Metro Search" will not find shortcuts to data files.

"Metro Search" will not find shortcuts to folders.

"Metro Search" will not find .URL or .WEBSITE shortcuts to Web sites.

"Metro Search" will not find any of the shortcuts to executable files that YOU create with the exception of the shortcuts to executable files that you place in

C:\Programdata\Microsoft\Windows\Start Menu\  
or in a subdirectory of this location.

When you place a shortcut (that points to an executable file) in

C:\Programdata\Microsoft\Windows\Start Menu\  
or in a subdirectory of this location, a corresponding single-wide tile is created on

the Metro "Start" screen.

the Metro "Start" screen.

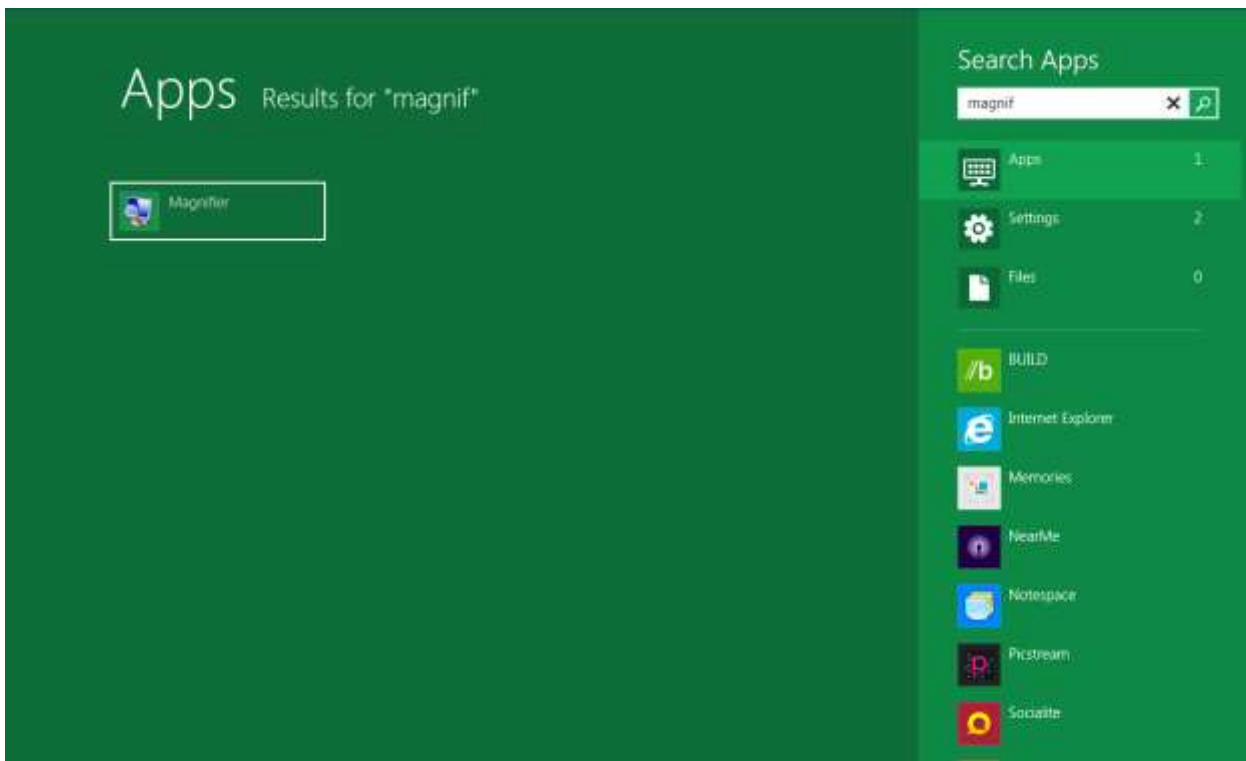
## RUNNING "METRO SEARCH"

Metro "Search" is many times faster than "Windows Desktop Search", which is available from the "Desktop View" of "Windows 8 Pre-beta".

Once you start using Metro "Search", you will seldom use the legacy "Windows Desktop Search".

Step 1:

When you are in the Metro "Start" screen and you wish to search for something, just start typing the name of whatever you are looking for. The action of typing immediately starts Metro "Search":



Your search results are automatically divided into "Apps", "Settings", and "Files". By default, you will be shown the search results that are in the "Apps" category

Step 2:

To view the search results in the "Settings" or "Files" group, you have to click on the respective "Settings" or "Files" buttons:

# Search Apps

magnif



Apps

1



Settings

2



Files

0



BUILD



Internet Explorer



Memories

## Step 3:

To exit out of Metro "Search" and return to the Metro "Start" screen, do one of the following:

Press once on one of the "Windows" keys on your keyboard  
or

Press Ctrl + Escape

or

Press Esc multiple times until you get a single-colored Metro screen; then use your left mouse button to click once on the single-colored Metro screen.

If you are working in the Metro "Start" screen or one of its "apps", and get get a blank single-colored screen, use your left mouse button to click once on the Metro screen and the Metro "Start" screen will be displayed in its tiled glory!

## KEYBOARD SHORTCUTS FOR "WINDOWS 8":

Windows + R --> Run box

Windows + P --> Dual and external monitor options

Windows + C --> Charms and clock

Windows + C --> New "Windows Explorer" window

Windows + F --> "Search Files" in "Metro Search"

Windows + L --> Go to "Lock Screen".

Windows + M --> Minimize all open Windows  
and go to Desktop

Windows + Q --> "Metro Search"

Windows + Q --> Step through Desktop windows only

Windows + U --> "Ease of Access Center"

For more keyboard shortcuts, see

<http://blogs.msdn.com/b/seealso/archive/2011/09/13/a-few-windows-8-keyboard-shortcuts.aspx>

and

<http://www.windows8news.com/2011/09/14/windows-8-developer-preview-keyboardmouse-shortcuts/>

## KEYBOARD SHORTCUTS FOR MICROSOFT OFFICE 2010:

ALT+W--> Display Ribbon bar

ALT --> Remove Ribbon bar

## Get the "Windows Task List":

Ctrl + Shift + Esc

or

Ctrl + Alt + Delete

"Control Panel" and "Windows Explorer" only show up as a "process" in "Windows Task List". Not in default initial view of "Windows Task List":

Click on "App History" tab.

Click on "More details".

Click on "Processes" or "Apps".

## CONTROL PANEL

The Metro version of "Control Panel" is very simplified but the bottom-most item takes you to the old "Desktop" version of the full-blown Control Panel.

Desktop version of "Control Panel" is now called "All Control Panel Items".

<http://www.mywindowsclub.com/resources/5099-How-open-old-control-panel-Windows.aspx>

## LOCK SCREEN

"Badges" on the "lock screen" come from apps. See

<http://www.tested.com/news/hands-on-the-four-best-new-features-of-microsoft-windows-8/2857/>

When you have a "lock screen" drag it up with your mouse cursor to get to the log-in screen.

## "WINDOWS MEDIA CENTER"

A new and enhanced "Windows Media Center" will eventually show up in "Windows 8" but it is not available in the "Windows 8 Pre-beta".

See

<http://blogs.msdn.com/b/b8/archive/2011/09/02/reflecting-on-our-first-conversations-part-2.aspx>

## "METRO SEARCH"

Very fast part of the "Windows 8" Metro "Start screen".

Not an "app":

Does not show up in default initial screen in the "Windows Task Manager".

From within the Metro "Start" screen, just start typing and "Metro Search" will be displayed.

"Metro Search" cannot find shortcuts to data files.

.BAT batch files can be found by "Metro Search".

## "WINDOWS DESKTOP SEARCH"

Much slower than the search that you run from the "Windows 8" Metro "Start screen.

Not an "app":

Does not show up in default initial screen in the "Windows Task Manager".

Not as competent as "Metro Search": "Windows Desktop Search" is unable to find a lot of files.

## "WINDOWS EXPLORER"

"Windows Explorer" in "Windows 8." only runs in "Desktop".

"Up" button in "Windows Explorer" is back.

This feature was last seen in "Windows XP".

This feature was missing in "Windows Vista" and "Windows 7".

## "WORDPAD 6.2" IN "WINDOWS 8.." CAN OPEN .DOCX FILES

"WordPad 6.2" can also permit a "Save As.." to modify or create .DOCX files.

"WordPad 6.2" cannot open, create, or modify .DOC files.

# MICROSOFT'S "HYPER-V" VIRTUAL MACHINE PROGRAM IS BUNDLED IN WITH "WINDOWS 8.."

"Hyper-V" runs as a "Snap-in" for "Microsoft Management Console" ("MMC").

"Hyper-V" installs a virtual network switch that your real host computer has to use for all network communications to the real Internet and to the real Local Area Network (LAN).

"Hyper-V" has virtual IDE and SCSI hard drive adapters--no virtual SATA network adapters are available. The bootable "virtual hard drive" of a virtual machine has to be attached to a virtual IDE adapter.

"Hyper-V" has no USB support--To attach a USB device to a virtual machine, you have to use Windows "File Sharing".

Must use a real wired network adapter--no support for real wireless network adapters.

"Hyper-V" runs as a legacy desktop app.

"Hyper-V" has little or no "Linux" support.

See also

<http://www.tested.com/news/windows-8-adds-hyper-v-virtual-machine-support/2844/>

and

<http://blogs.msdn.com/b/b8/archive/2011/09/07/bringing-hyper-v-to-windows-8.aspx>

and

<http://www.askvg.com/windows-8-will-come-with-hyper-v-microsoft-confirms/>

# PROCEDURE FOR TURNING ON "HYPER-V" IN "WINDOWS 8 PRE-BETA"

"Hyper-V" installs by default when you install "Windows 8 Pre-beta" but you have to turn on "Hyper-V" before you start using it:

Step 1:

Go to the "Control Panel" in the Metro Start screen.

Step 2:

Click on "More settings.." at the bottom.

Step 3:

Click on "Programs and Features".

Step 4:

Click on "Turn Windows features on or off".

Step 5:

If there is not one there already, put a checkmark in the square box to the left of "Hyper-V".

If you cannot put a checkmark in the square box to the left of "Hyper-V" and the square box is filled with the color blue, then you cannot run "Hyper-V" due to hardware inadequacy of your computer.

Step 6:

Go back to the "Metro" Start screen.

Step 7:

Type in  
Hyper-V

Step 8:

Right click on the "Hyper-V Manager" tile and select "Pin" in the settings bar at the bottom of the computer screen.

Step 9:

Press the "Windows" button of the keyboard.

Step 10:

Look for the "Hyper-V Manager" tile and click on it.

Step 11:

The "Hyper-V" program will start from inside the legacy "Desktop".

## PROCEDURE FOR CLONING A VIRTUAL MACHINE IN "HYPER-V"

You can clone a virtual machine:

Step 1:

Make a copy of the .VHD virtual hard disk file(s) of the existing virtual machine .

Step 2

Create a new virtual machine which will require that you create a new .VHD virtual hard disk file.

Step 3:

After the new virtual machine is created, disconnect and delete the newly-created .VHD virtual hard drive.

Step 4:

Attach the copied .VHD virtual hard disk (that you created in "Step 1") to the newly-created virtual machine.

Step 5:

Create a virtual "legacy network adapter" for your new virtual machine.

Step 6:

Start up the new virtual machine and select the "I copied.." option from the pop-up context menu.

At this point, the virtual network adapter of your cloned virtual machine will acquire a unique MAC address and IP address.

# "WINDOWS XP MODE" IS MISSING IN "WINDOWS 8.."

If you have legacy software applications that have to run in "Windows XP", you will have to eventually run them in a licensed copy of "Windows XP" that is running in the "Hyper-V" virtual machine program that is bundled with "Windows 8".

## TEMPORARY WORKAROUND FOR RUNNING LEGACY SOFTWARE PROGRAMS THAT HAVE TO RUN FROM WITHIN "WINDOWS XP"

As a temporary time-limited solution, you can do the following inside a "Windows 8" computer:

Use "Programs & Features" in the "Control Panel" to turn on "Hyper-V".

Download the free "Windows 7 Enterprise Trial" from [microsoft.com](http://microsoft.com)

Install "Windows 7 Enterprise Trial 64-bit" into a virtual machine running inside "Hyper-V".

Start up the "Windows 7 Enterprise Trial 64-bit" virtual machine.

Download and install "Windows XP Mode" (and "Windows Virtual PC") into the "Windows 7 Enterprise Trial 64-bit" virtual machine.

Move the "Windows XP Mode" virtual machine so that it runs in "Hyper-V" instead "Windows Virtual PC" so that it does not have to run as a nested virtual machine: You will actually be moving the "Windows XP Mode" .VHD" file from the "Windows 7 Enterprise Trial 64-bit" virtual machine to the hard drive location where "Hyper-V" keeps its .VHD virtual hard drive files. Then you will start a "Create" virtual machine in "Hyper-V". When asked to either create a new virtual hard disk or attach to an existing hard disk, you can attach the new "Windows XP.." virtual machine to the moved .VHD file.

When you complete the "Create.." wizard, you will have a virtual machine that runs "Windows XP Professional 32-bit" inside the "Hyper-V" program that is bundled in "Windows 8 Pre-beta".

# VIRTUAL MACHINE PROGRAMS SUPPORT IN "WINDOWS 8 PRE- BETA"

The "Windows 8/Hardware SIG" of the Tucson Computer Society reports the following findings:

For both the 64-bit and 32-bit versions of "Windows 8 Pre-beta" running in a real, physical computer:

"VMware Player 3" would not install.

"VMware Player 4" would not install

"Oracle VM VirtualBox 4.1" caused "Windows 8 Pre-beta" to fail to boot.

"VMware Workstation 8" would not install.

The bottom line is:

If you wish to run virtual machines in "Windows 8 Pre-beta", you must use the "Hyper-V" virtual machine program that is bundled.

# HACKS FOR "WINDOWS 8 PRE-BETA"

## GETTING THE "START MENU" BACK

You can get the Windows "Start Menu" back so that the "Start Menu" pops up from the right side of the "Task Bar", just to the left of the "Notification Area" in the legacy "Desktop" of "Windows 8".

See

<http://www.neowin.net/news/windows-8-how-to-re-enable-the-classic-start-menu>

and

<http://www.eightforums.com/tutorials/2460-start-menu-toolbar-create-windows-8-taskbar.html>

If you are running the 64-bit version of "Windows 8 Pre-beta", you need to perform the above "hack" to create a "Start Menu" button for both "Program Files" and "Program Files (x86)":



## FREE "METRO UI TWEAKER" SOFTWARE UTILITY

See

<http://www.windows8news.com/2011/10/03/metro-ui-tweaker-tweak-windows-8-user-interface/>

and

<http://www.addictivetips.com/windows-tips/tweak-and-customize-windows-8-with-metro-ui-tweaker/>

# DISABLING THE METRO "START" SCREEN

See  
<http://www.intowindows.com/disable-windows-8-metro-ui/>

## TO MAKE A DESKTOP SHORTCUT FROM AN EXISTING "START" SCREEN TILE:

Right click on the tile.

Click on the "Advanced" icon in the bottom bar.

Click on "Open file location" in the pop-up context menu.

A "Windows Explorer" window will open.

Use the right mouse button to drag the highlighted file to the desktop.

Release the right mouse button.

Click on "Create shortcut here" in the pop-up context menu.

# USB FLASH DRIVES

Inserting a USB flash drive brings up a pop-up utility menu with some new choices:

Win8Pre-beta64bitonU...

Choose what to do with storage devices.

General options



Open folder to view files  
using Windows Explorer (Desktop)



Speed up my system  
using Windows ReadyBoost (Desktop)



Configure this drive for backup  
using File History (Desktop)



Take no action

# USER ACCOUNTS

There are two types user accounts in "Windows 8 Prebeta":

(Existing) Hotmail login  
and  
local account

When you use a Hotmail account to log in, "Windows 8.." stores configuration up on your "hotmail.com" account in Microsoft's cloud.

# FILEHISTORY FOLDER

"Windows 8.." maintains a "FileHistory" folder on the first external hard drive that you attach to a "Windows 8.." computer.

See

<http://techblog.ginktage.com/2011/09/how-to-enable-file-history-backup-feature-on-windows-8/>

and

<http://www.howtogeek.com/74623/how-to-use-the-new-file-history-feature-in-windows-8/>

and

<http://www.eightforums.com/tutorials/2484-file-history-how-use-windows-8-a.html>

and

<http://www.winrumors.com/hands-on-windows-8-file-history-backup/>

and

<http://www.addictivetips.com/windows-tips/the-complete-guide-to-windows-8-file-history-backup/>

# PROBLEMS ENCOUNTERED WITH "WINDOWS 8 PRE-BETA:

We have been getting a lot of hard drive errors for any external USB, external eSATA, or additional SATA hard drives that we attach to real or virtual computers running "Windows 8 Pre-beta.

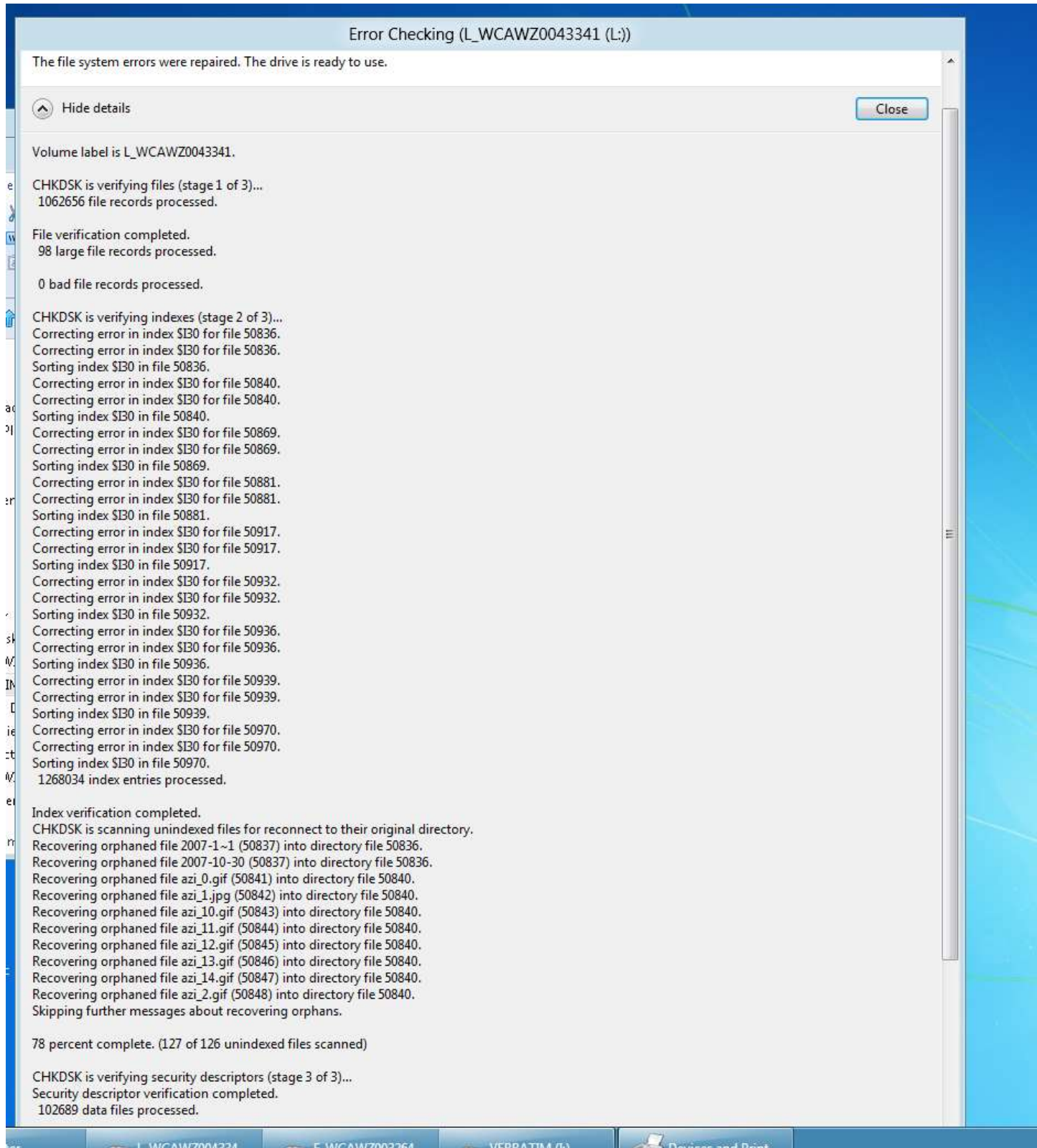
Because of these problems, we do not recommend the use of "Windows 8 Pre-beta" in a "production environment".

If you wish to use "Windows 8 Pre-beta" to do real work, be sure to perform frequent, preferably automated backups of any data files in order to avoid data loss caused by the instability of "Windows 8 Pre-beta".

For both "Internet Explorer 10 beta" and "Mozilla Firefox 7", Flash videos at both "cnn.com" and "YouTube" fail after 15 seconds.

# EXAMPLE OF HARD DRIVE ERRORS THAT WERE PROBABLY CAUSED BY "WINDOWS 8 PRE-BETA":

September 28, 2011:





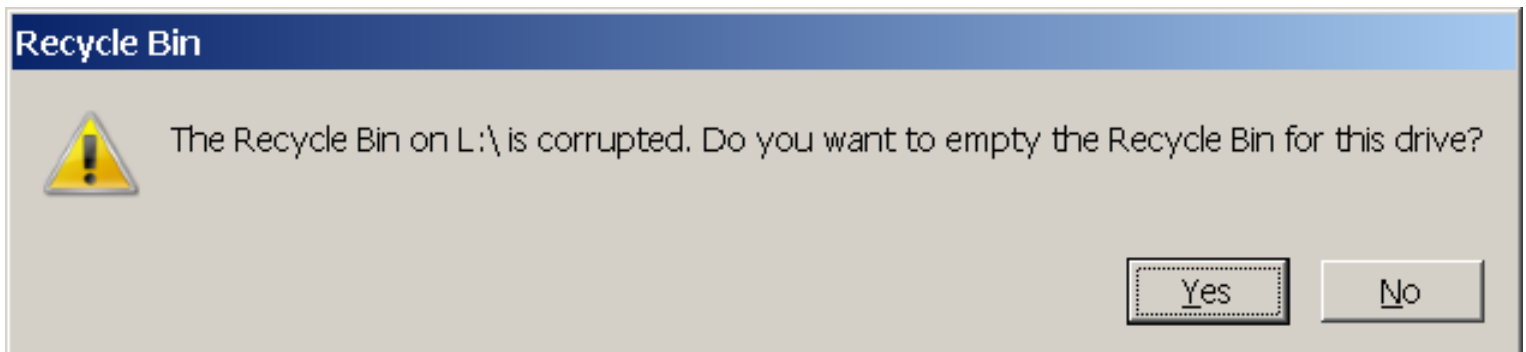
```
replacing invalid security id with default security id for file 1133826.
replacing invalid security id with default security id for file 1133828.
replacing invalid security id with default security id for file 1133829.
replacing invalid security id with default security id for file 1133830.
1134336 file SIDs/SIDS processed.
Security descriptor verification completed.
72569 data files processed.
correcting errors in the Master File Table (MFT) mirror.
CHKDSK discovered free space marked as allocated in the volume bitmap.
windows has made corrections to the file system.

2861458 MB total disk space.
2434511 MB in 600054 files.
218184 KB in 72571 indexes.
0 KB in bad sectors.
1289879 KB in use by the system.
65536 KB occupied by the log file.
435686212 KB available on disk.

4096 bytes in each allocation unit.
732533503 total allocation units on disk.
108921553 allocation units available on disk.
```

\*

Additional non-fatal hard drive errors caused by "Windows 8 Pre-beta":



The fix for this problem is located at

[http://aztcs.org/meeting\\_notes/winhardsig/harddrives/repairing/070-corrupted-Recycle-Bin.pdf](http://aztcs.org/meeting_notes/winhardsig/harddrives/repairing/070-corrupted-Recycle-Bin.pdf)

## "WINDOWS FAX"

"Windows Fax" exists inside "Windows 8 Pre-beta". However, we were unable to get it working with our "U.S. Robotics" and "Trendnet" USB modems: After dialing up into a fax modem, "Windows Fax" failed to transmit a handshake request to the remote fax machine.

We expect to see this problem resolved in future beta versions of "Windows 8".

## "WINDOWS 8" TUTORIAL GUIDES

Once you get "Windows 8 Pre-beta" installed somewhere, you will probably need to read a few tutorials to get smarter on the new-fangled features of "Windows 8..":

See

<http://www.webscopia.com/2011/09/windows-8-all-you-want-to-know-help-guide-how-to/>

and

<http://www.slashgear.com/microsoft-windows-8-complete-guide-13179119/>

and

<http://blogs.msdn.com/b/robmar/archive/2011/09/14/download-the-windows-8-guide.aspx>

and

<http://www.sysprobs.com/guide-install-windows-8-virtualbox>

and

<http://www.addictivetips.com/windows-tips/the-complete-guide-to-windows-8-explorer-new-ribbon-tools-and-options/>

and

<http://blogs.computerworld.com/18951/four-windows-8-secret-tips-and-tricks>

and

<http://www.techradar.com/news/software/operating-systems/hands-on-windows-8-review-1025259>

and

<http://www.howtogeek.com/74331/how-to-create-your-own-windows-8-shortcuts-for-shutdown-perhaps/>

and

<http://www.addictivetips.com/windows-tips/the-complete-guide-to-windows-8-startup-menu/>

and

<http://www.addictivetips.com/windows-tips/how-to-enable-64-bit-mode-in-internet-explorer-10-on-windows-8/>

and

<http://www.addictivetips.com/windows-tips/how-to-restart-log-off-sleep-and-shutdown-windows-8>

and

<http://www.addictivetips.com/windows-tips/how-to-automatically-login-to-windows-8-direct-logon/>

and

[http://www.huffingtonpost.com/2011/09/13/windows-8-features\\_n\\_960478.html#s359959&title=Touchscreen Password To](http://www.huffingtonpost.com/2011/09/13/windows-8-features_n_960478.html#s359959&title=Touchscreen+Password+To)

and

<http://www.windows8news.com/2011/09/14/windows-8-developer-preview-keyboardmouse-shortcuts/>

and

<http://www.addictivetips.com/windows-tips/the-complete-guide-to-windows-8-file-history-backup/>

and

<http://www.addictivetips.com/windows-tips/the-complete-guide-to-windows-8-startup-menu/>

and

<http://vasudevq.blogspot.com/2011/09/download-windows-8-guide-and-factsheet.html>

and

<http://technomondo.com/2011/09/16/the-complete-guide-to-windows-8-metro-control-panel/>

and

<http://www.notebookreview.com/default.asp?newsID=6268>

and

<http://www.triviaburst.com/blog/2011/09/13/microsoft-windows-8-complete-guide/>

and

<http://www.ithinkdiff.com/enable-windows-8-aero-aurora-feature-how-to-guide/>

and

<http://gizmofusion.com/2011/09/windows-8-new-way-to-shutdown-your-computer-step-by-step-guide/>

and

<http://www.howtogeek.com/74331/how-to-create-your-own-windows-8-shortcuts-for-shutdown-perhaps/>

and

<http://www.mywindowsclub.com/resources/5103-How-create-Shutdown-Shortcut-Windows.aspx>

and

<http://www.addictivetips.com/windows-tips/how-to-restart-log-off-sleep-and-shutdown-windows-8/>

and

<http://www.pcmag.com/slideshow/story/287925/a-windows-8-glossary/1#fbid=vyRgypapQc9>

and

<http://chris.59north.com/post/2011/09/15/Windows-8-feature-Charms.aspx>

and

<http://www.techrepublic.com/blog/window-on-windows/tweak-windows-8-to-remove-the-metro-interface/5077>

and

<http://www.intowindows.com/disable-windows-8-metro-ui/>

and

<http://maketecheasier.com/a-quick-peek-at-windows-8/2011/09/22>

and

<http://arstechnica.com/microsoft/news/2011/09/metro-style-internet-explorer-10-ditches-flash-plugins.ars>

and

<http://blogs.msdn.com/b/b8/archive/2011/09/14/metro-style-web-browsing-one-engine-two-experiences-no-compromises.aspx>

and

<http://www.tomsguide.com/us/Internet-Explorer-Metro-Flash-HTML5-Dean-Hachamovitch,news-12536.html>

and

<http://www.addictivetips.com/windows-tips/tweak-and-customize-windows-8-with-metro-ui-tweaker/>

and

<http://www.emoiz.com/top-50-windows-8-tips-and-tricks-and-secrets>

## SOME TEST DRIVES OF THE "WINDOWS 8 PRE-BETA" BY COMPUTER INDUSTRY PUNDITS

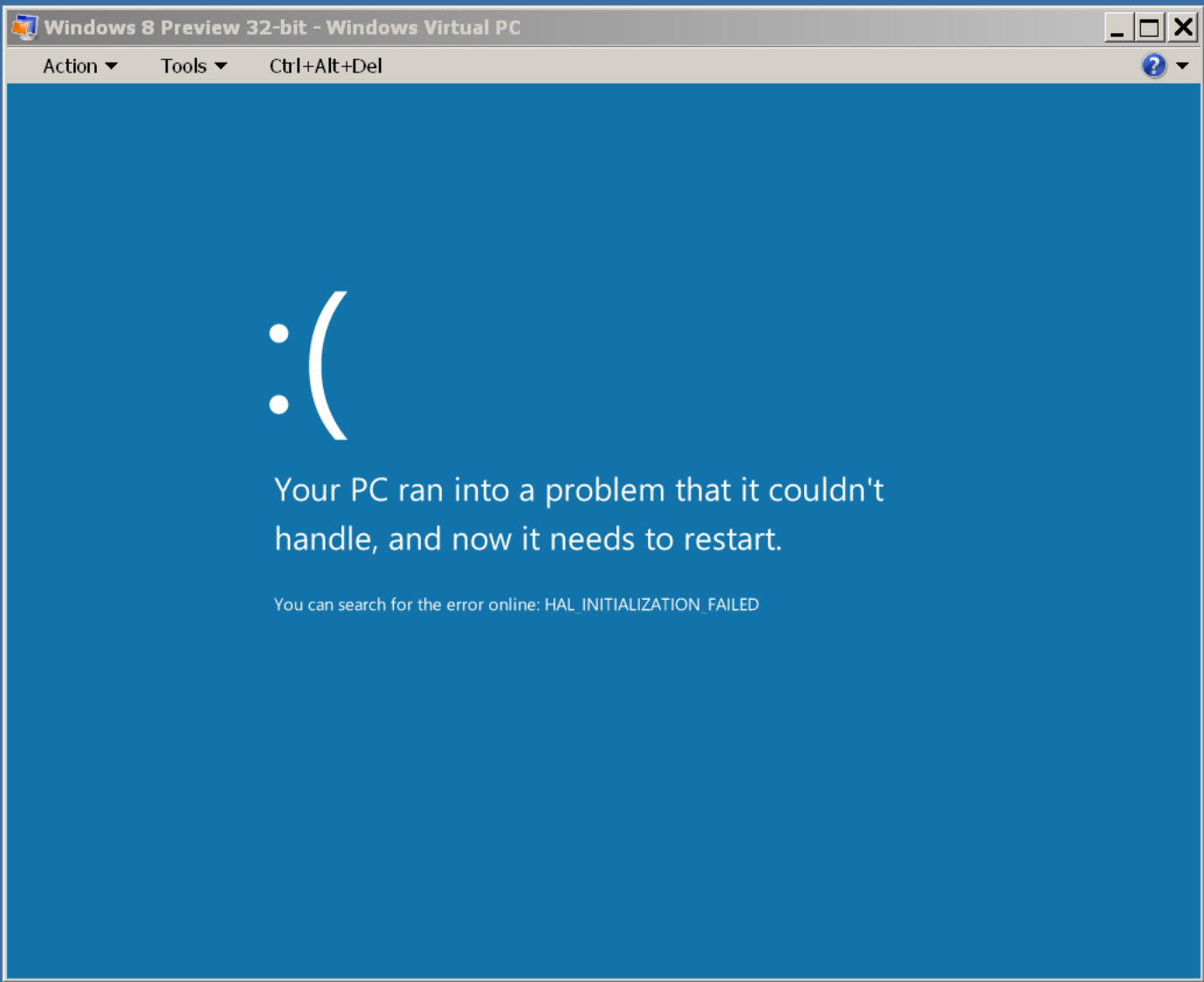
[http://www.computerworld.com/s/article/9217261/Continuing\\_coverage\\_Microsoft\\_Windows\\_8\\_News\\_analysis\\_opinion\\_blogs\\_more](http://www.computerworld.com/s/article/9217261/Continuing_coverage_Microsoft_Windows_8_News_analysis_opinion_blogs_more)

<http://www.techradar.com/news/software/operating-systems/hands-on-windows-8-review-1025259>

<http://www.pcadvisor.co.uk/reviews/windows/3284198/microsoft-windows-8-review/>

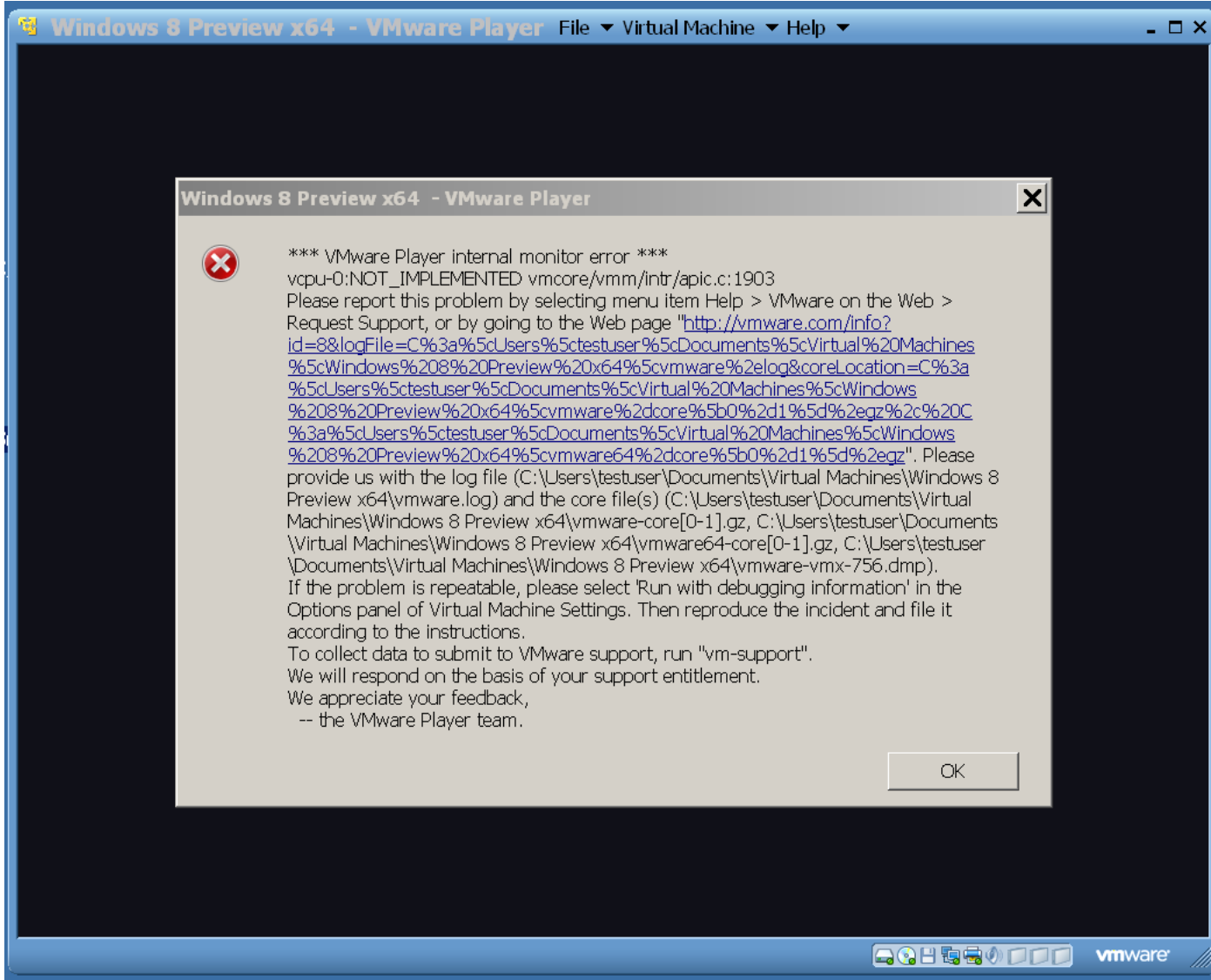
<http://www.windowsfordevices.com/c/a/News/Windows-8-reviewed/>

FAILED INSTALLATION OF "WINDOWS 8" PRE-BETA  
INTO "WINDOWS VIRTUAL PC"



We failed to install both the 64-bit and the 32-bit versions of the pre-beta of "Windows 8" into "Windows Virtual PC".

**FAILED INSTALLATION OF "WINDOWS 8" PRE-BETA INTO "VMWARE PLAYER 3"**



We failed to install both the 64-bit and the 32-bit versions of "Windows 8 Pre-beta" into "VMware Player 3".

We succeeded in installing both the 64-bit and the 32-bit versions of "Windows 8 Pre-beta" into "VMware Player 4".